

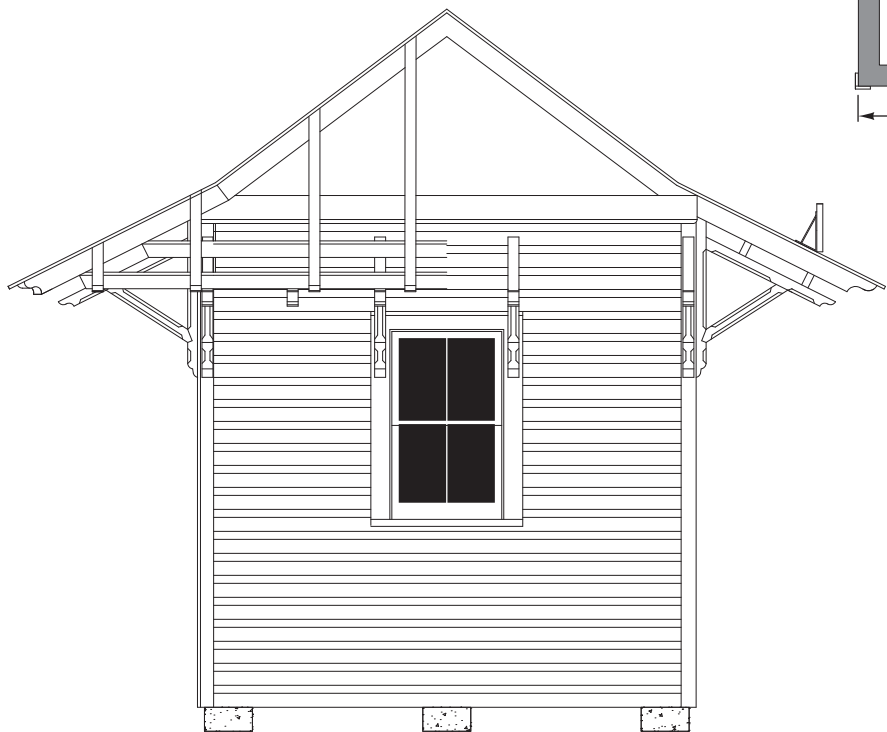
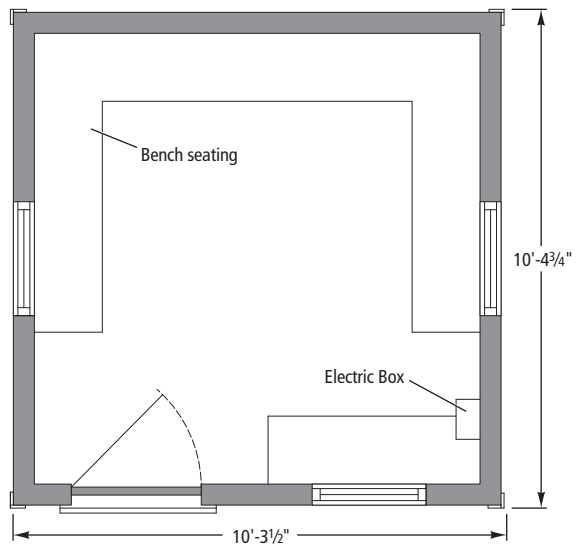
Drawn for *Model Railroader* magazine by
HAROLD W. RUSSELL
 Magazine purchaser may have photocopies of these drawings made as an aid to personal model making but does not have the right to distribute copies of the drawings to others. Contact *Model Railroader* regarding commercial use of these drawings.



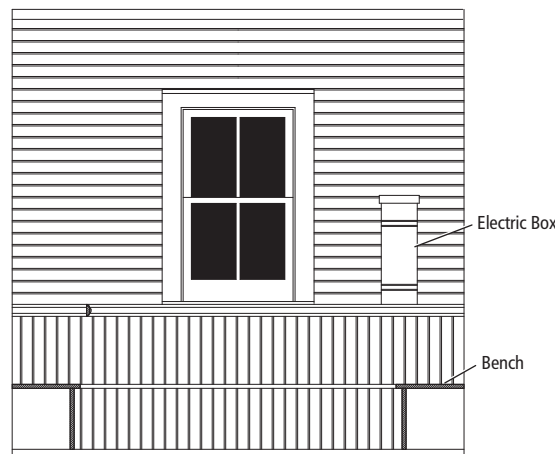
Track side

Ratio 1:48, O scale

TO CONVERT O SCALE DRAWINGS TO YOUR SCALE COPY AT THESE PERCENTAGES:
 N 30 percent HO 55.1 percent S 75 percent



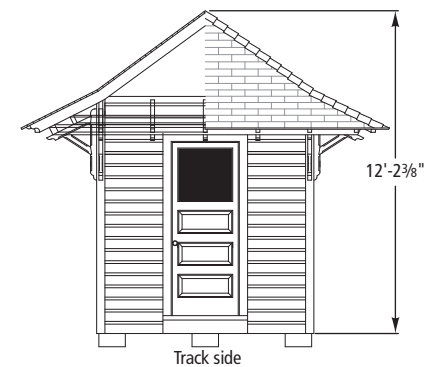
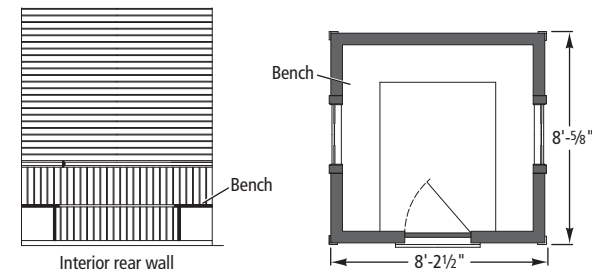
Side walls (rear wall is blank)



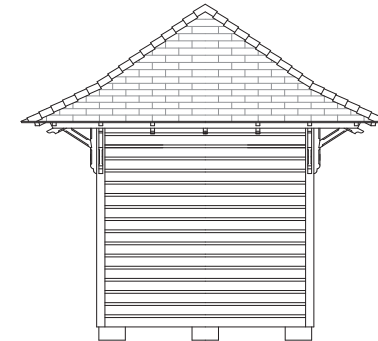
Interior wall

Ratio 1:87.1, HO scale

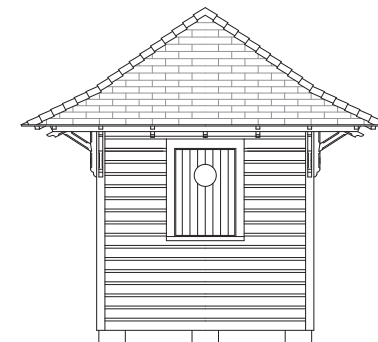
TO CONVERT HO SCALE DRAWINGS TO YOUR SCALE COPY AT THESE PERCENTAGES:
 N 54.4 percent S 136.1 percent O 181.4 percent



Track side



Rear Wall



Side walls