

**Waterbury, Vt., station
Central Vermont Ry.**



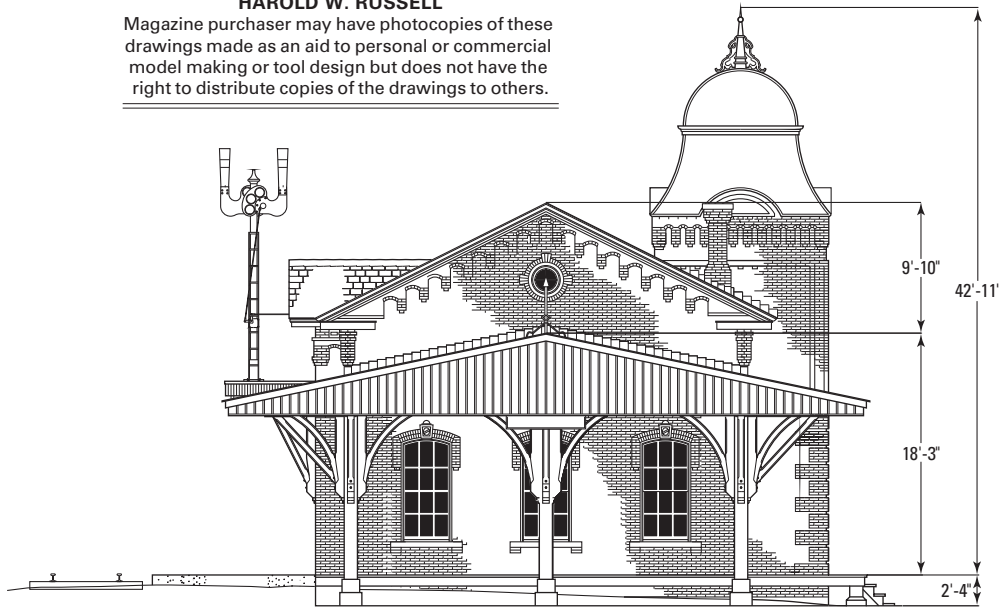
Street side

Drawn for *Model Railroader* magazine by
HAROLD W. RUSSELL

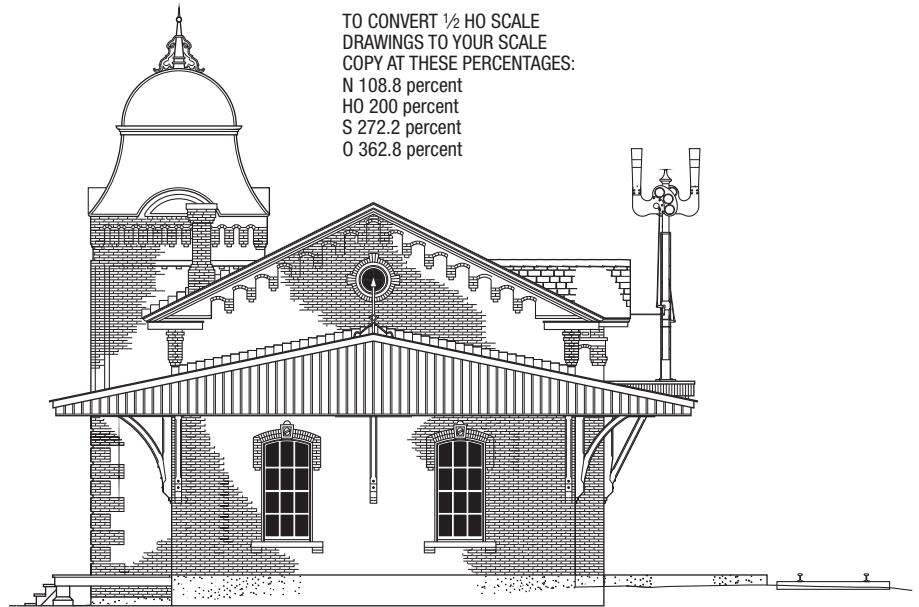
Magazine purchaser may have photocopies of these drawings made as an aid to personal or commercial model making or tool design but does not have the right to distribute copies of the drawings to others.

Ratio 1:174.2, 1/2 HO scale

TO CONVERT 1/2 HO SCALE
DRAWINGS TO YOUR SCALE
COPY AT THESE PERCENTAGES:
N 108.8 percent
HO 200 percent
S 272.2 percent
O 362.8 percent

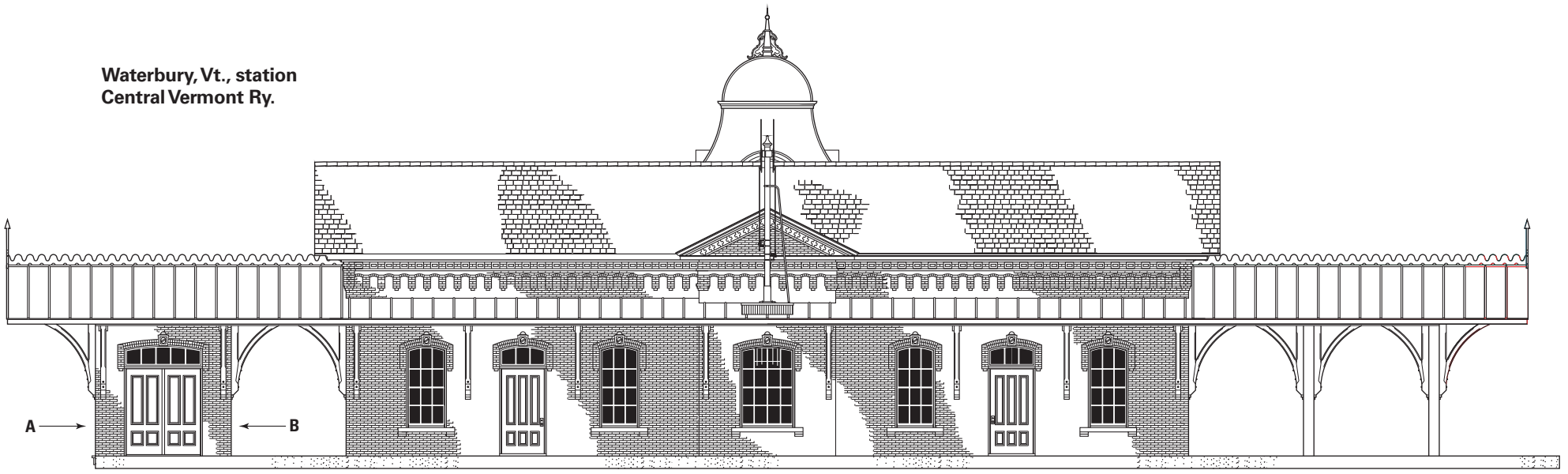


West end

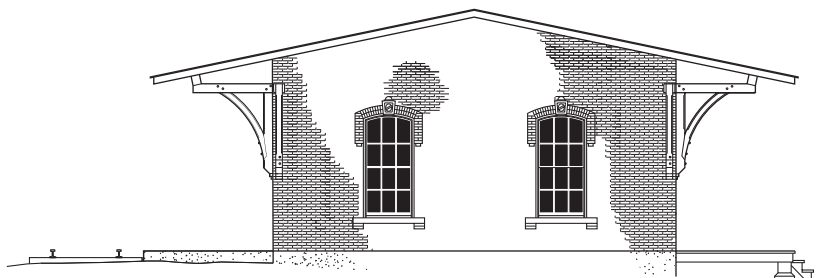


East end

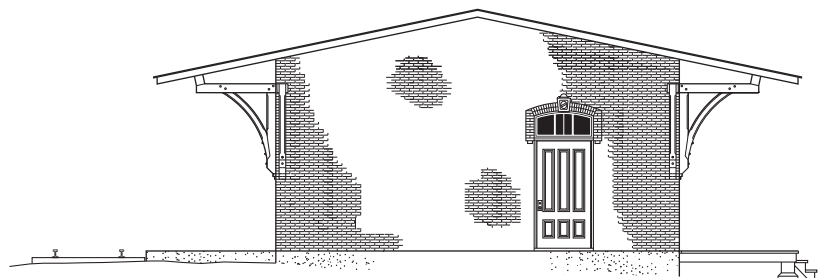
**Waterbury, Vt., station
Central Vermont Ry.**



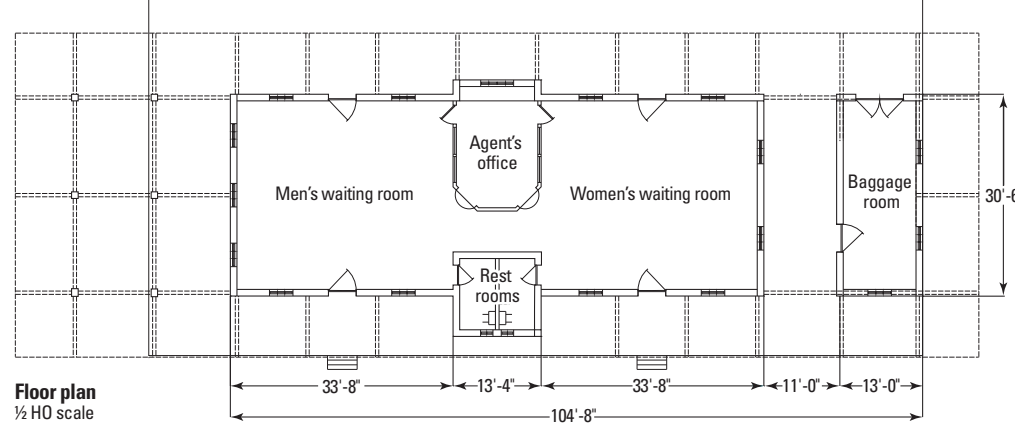
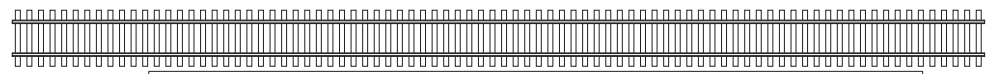
Track side



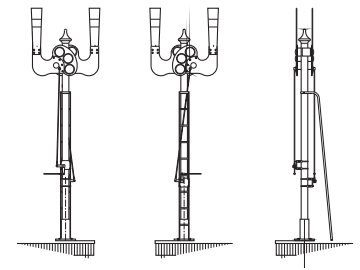
View A



Baggage room view B



**Floor plan
1/2 HO scale**



Train order signals