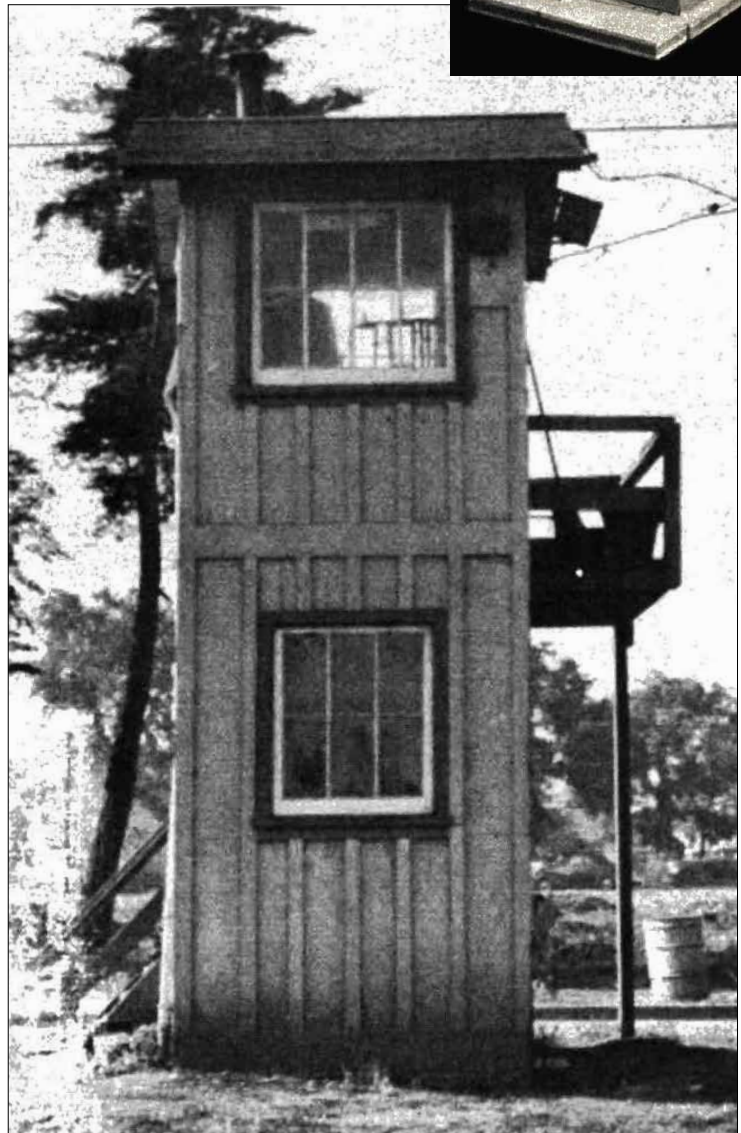
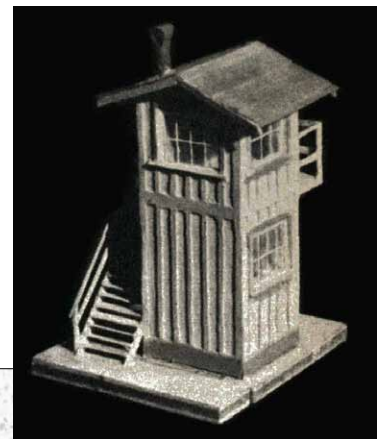


1:29-scale gateman's tower

Railroads use towers or multi-story structures for a variety of purposes. The best known are probably switch towers. These included everything from modest wooden buildings to large brick or concrete edifices.

Not nearly as well known were gateman's towers. These were like miniature switch towers, usually housing only a single man, and were placed along well-traveled mainlines on many major railroads. When the train came, it was the gateman's job to activate the signals and crossing gates. With the advent of automation, this job was lost, as was the paraphernalia, like the gateman's tower, that went with it.

The tower presented here, modeled after one on the Southern Pacific, is reprinted from the August 1949 edition of *Model Railroader*. Although gateman's towers were used primarily on standard-gauge railroads, there's no reason why a well heeled narrow-gauge line couldn't employ them as well.

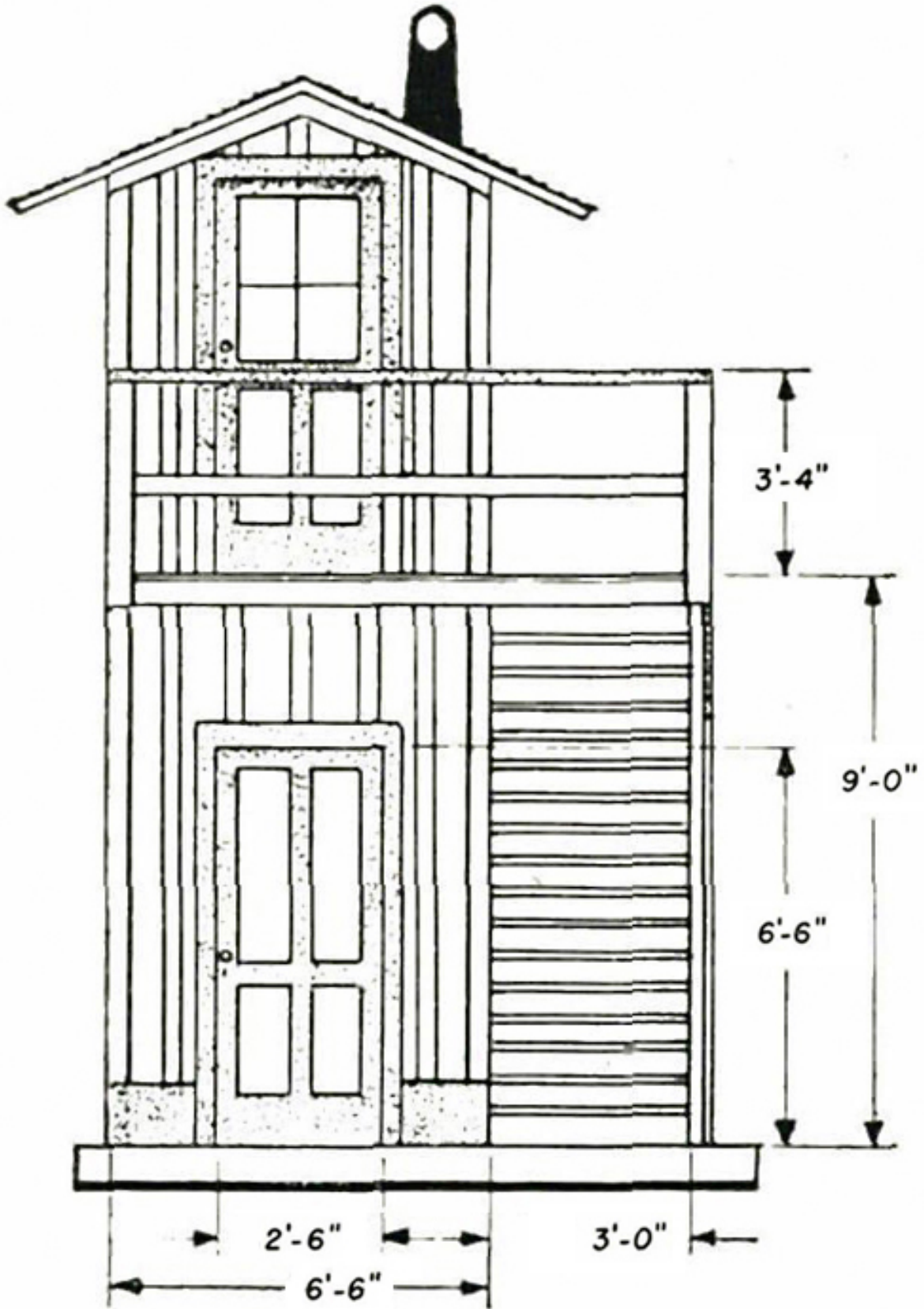


Prototype photo

Are you working in a different scale?

If you're not working in 1:29 scale, print the drawings out at the percentage given below for your scale.

1:32 scale	91%
1:24 scale	121%
1:22.5 scale	129%
1:20.3 scale	143%
1:19 scale	153%
1:13.7 scale	212%



Drawings are full size for 1:29 scale

