

# Sand house drawings in 1:29 scale

Illustrations by Steve Terry

(redrawn from the July 1957 issue of *Model Railroader* magazine)

Sand is an important commodity for the operation of a railroad, particularly in bad weather. Nearly every locomotive carried one or more sand boxes. A control in the cab would allow sand to fall through a pipe onto the rails, providing traction when there was ice about.

Sand was supplied to the engines in a variety of ways. Sand towers were common sights on railroads of all sizes. They stood next to the track, usually in the locomotive-servicing areas, where topping up the sand box was part of routine servicing.

The plans for this issue, taken from the July 1957 issue of *Model Railroader* magazine, are for something a little more elaborate—a complete sand house. Sand would be delivered to the sand house in low-side gondolas. Upon arrival, it would be brought into the house, where it would be screened for size and run through driers to remove moisture (which could cause the sand to clump). Then it would be blown into the sand tower, ready for use on the engines.

This is an online supplement to the October 2012 issue of *Garden Railways* magazine. To purchase previously published paper plans, see the list of those available at [www.sidestreet.info](http://www.sidestreet.info)

## Are you working in a different scale?

If you're not working in 1:29 scale, print the drawings out at the percentage given below for your scale.

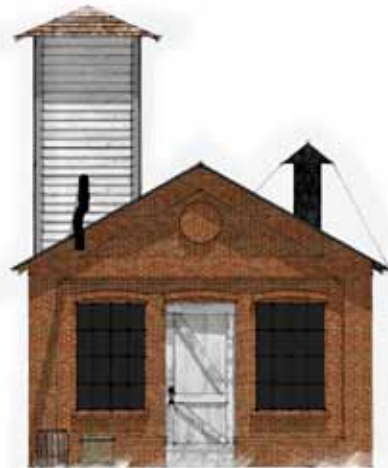
1:32 scale	91%
1:24 scale	121%
1:22.5 scale	129%
1:20.3 scale	143%
1:19 scale	153%
1:13.7 scale	212%



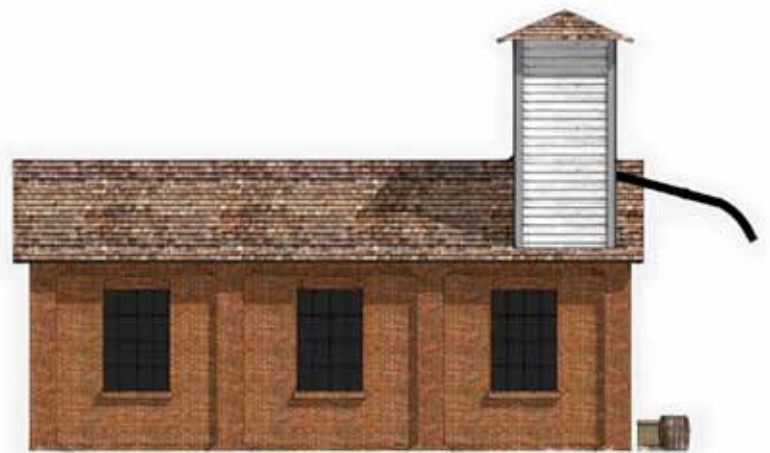
# How to assemble the drawings

FE-1	FE-2	S1-1	S1-2	S1-3	TOWER 1	TOWER 2	FRONT DOOR
FE-3	FE-4	S1-4	S1-5	S1-6	TOWER 3	REAR DOOR	
RE-1	RE-2	S2-1	S2-2	S2-3			
RE-3	RE-4	S2-4	S2-5	S2-6			

Drawings are full size for 1:29 scale



Front elevation (FE)



Side view 1 (S1)

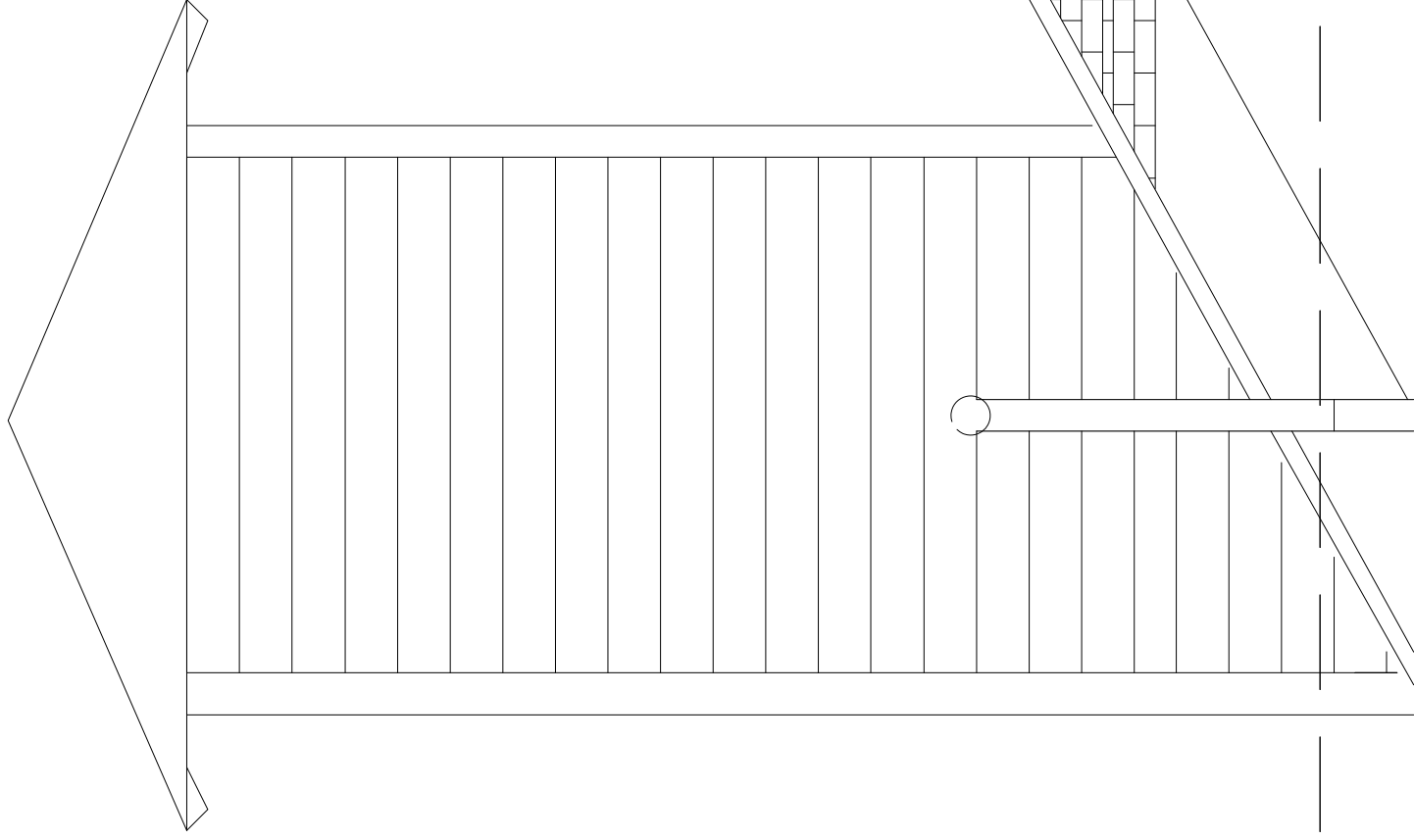


Back elevation (BE)

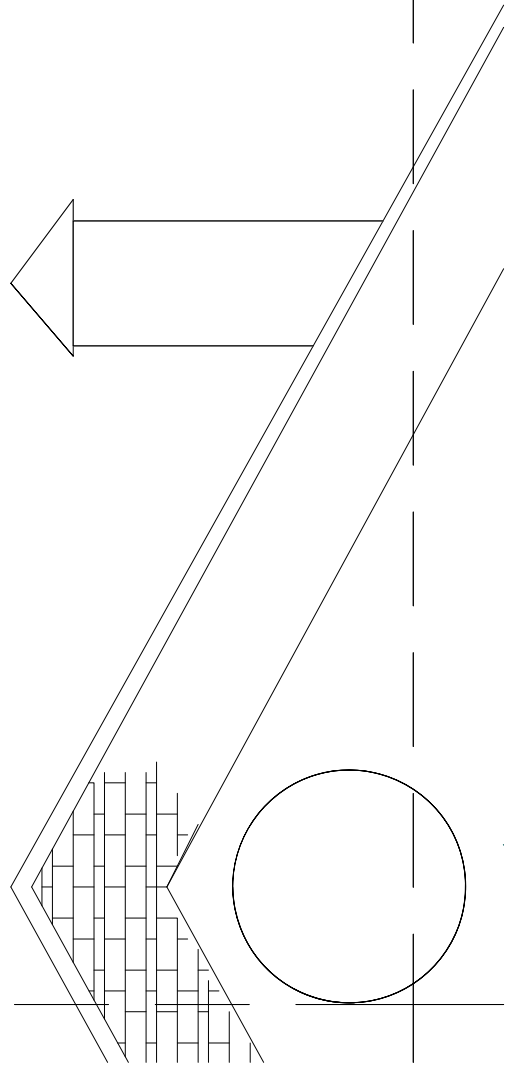


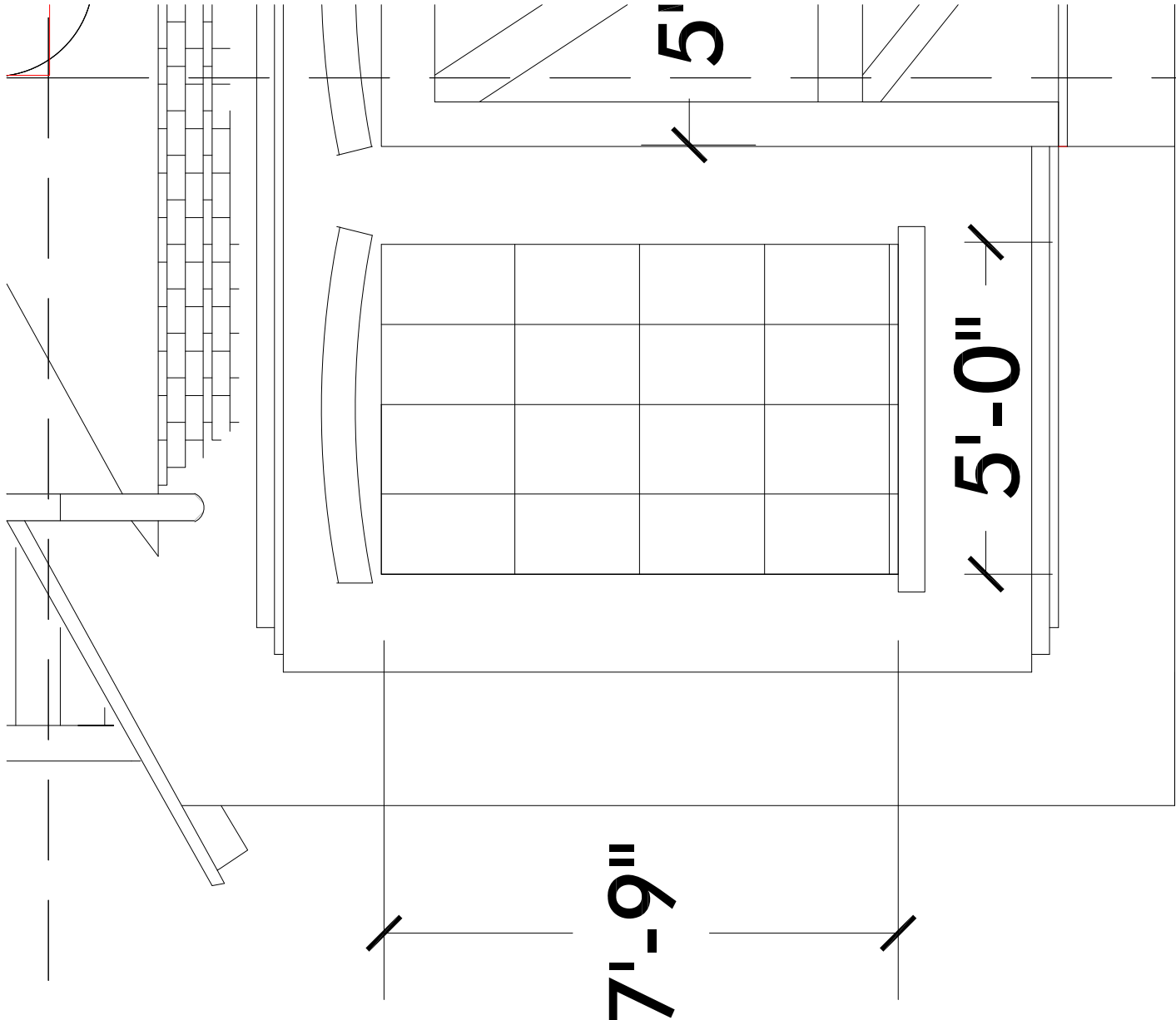
Side view 2 (S2)

**FRONT ELEVATION - FE-1**

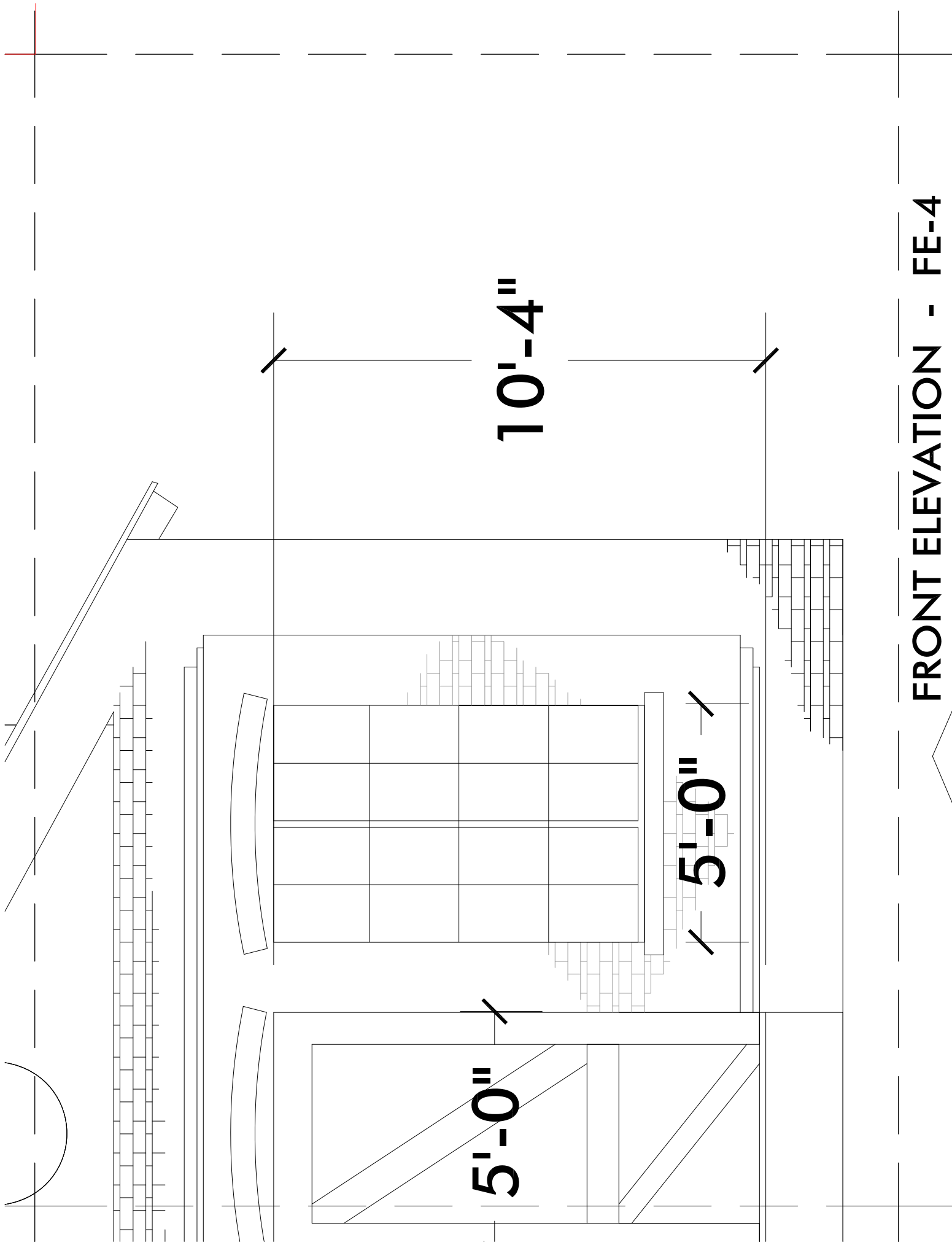


**FRONT ELEVATION - FE-2**





**FRONT ELEVATION - FE-3**



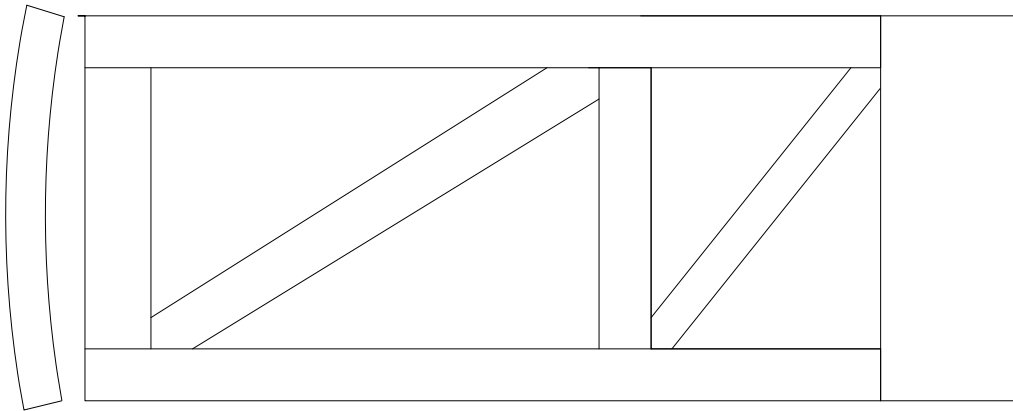
10'-4"

5'-0"

5'-0"

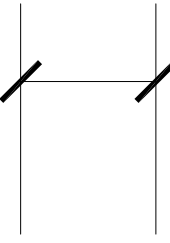
FRONT ELEVATION - FE-4

**FRONT DOOR**

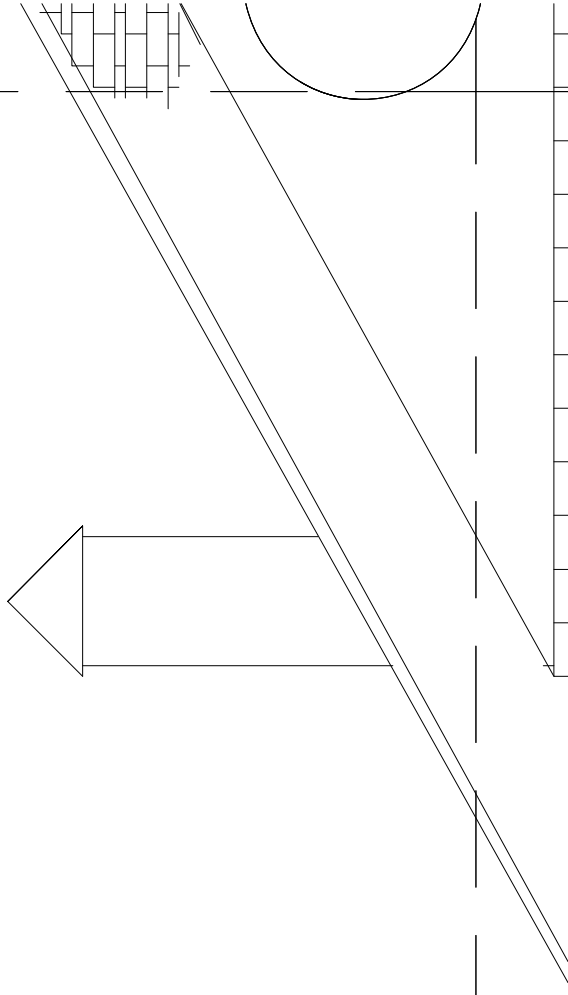


**10'-3"**

**1'-9"**



**REAR ELEVATION - RE-1**

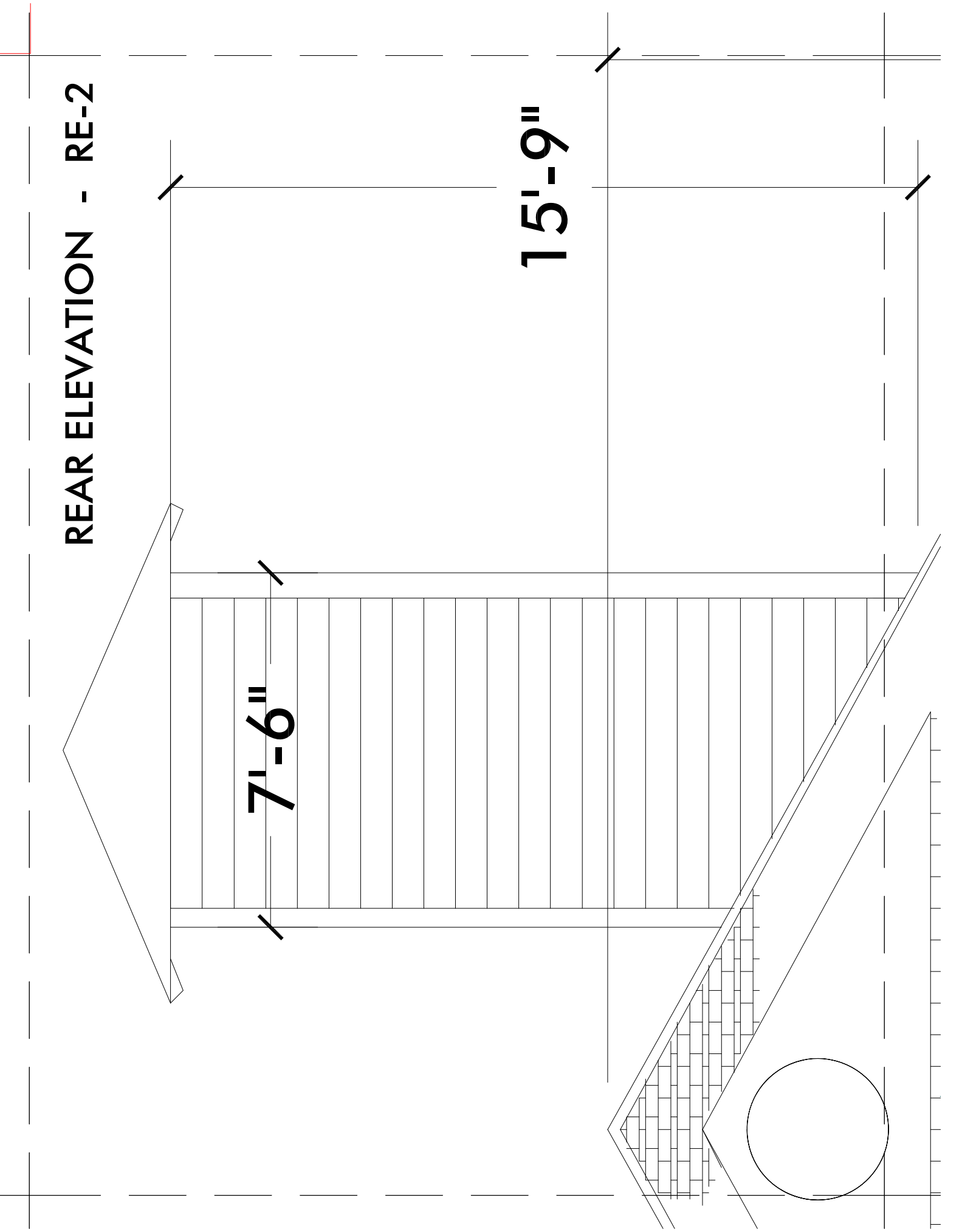


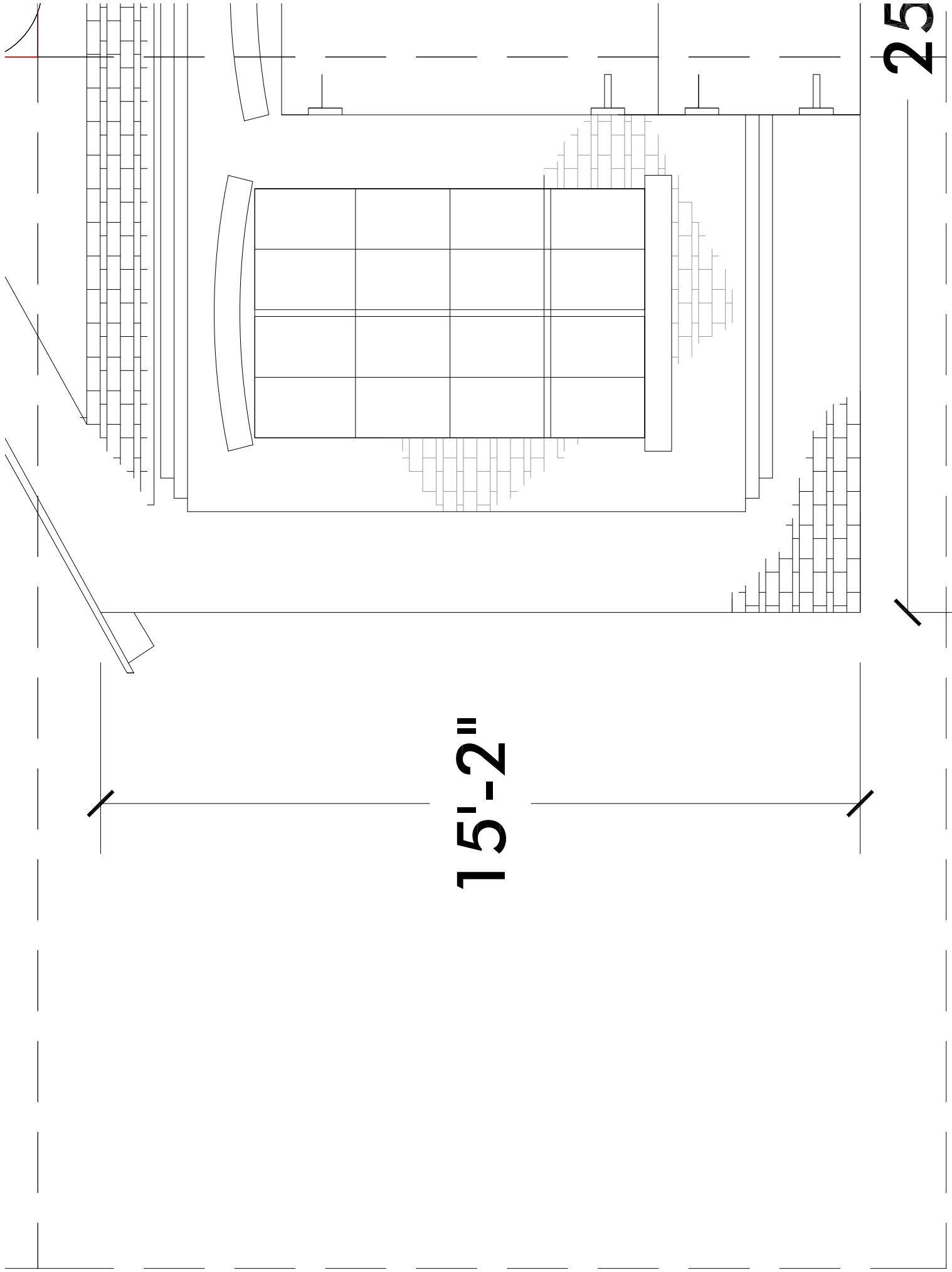


REAR ELEVATION - RE-2

7'-6"

15'-9"

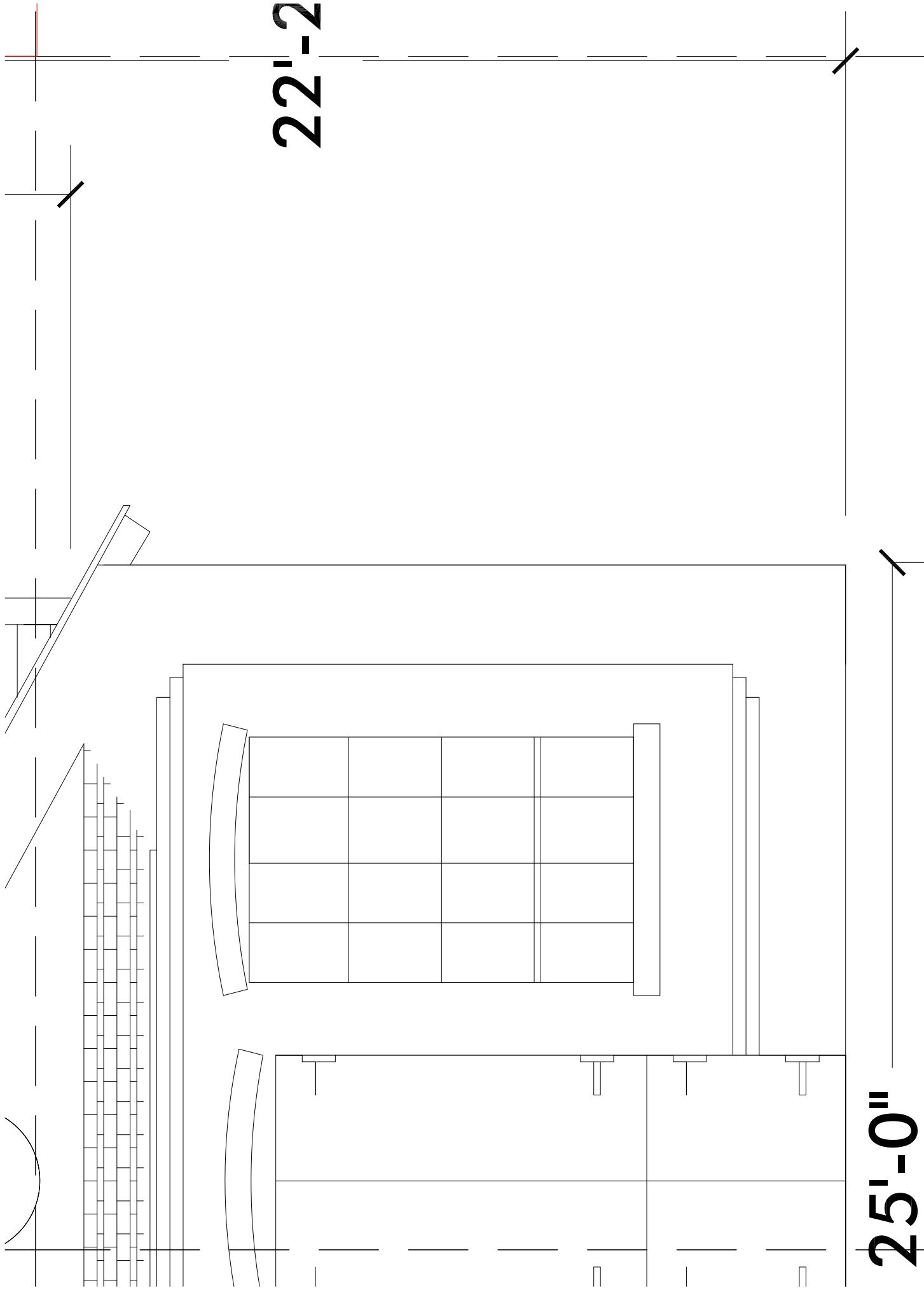




15'-2"

25

REAR ELEVATION - RE-3

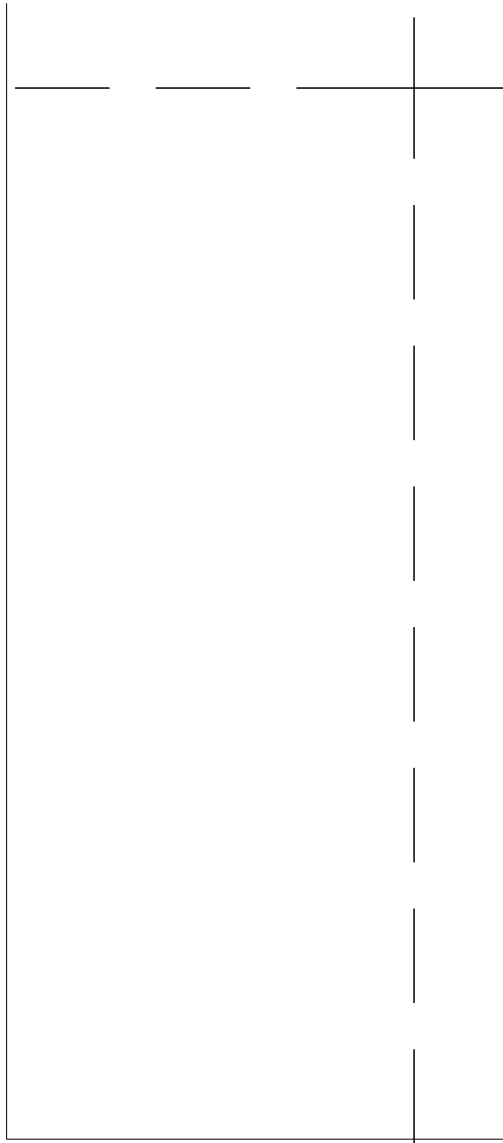


22'-2"

25'-0"

REAR ELEVATION - RE-4

**SIDE 1 - S1-1**



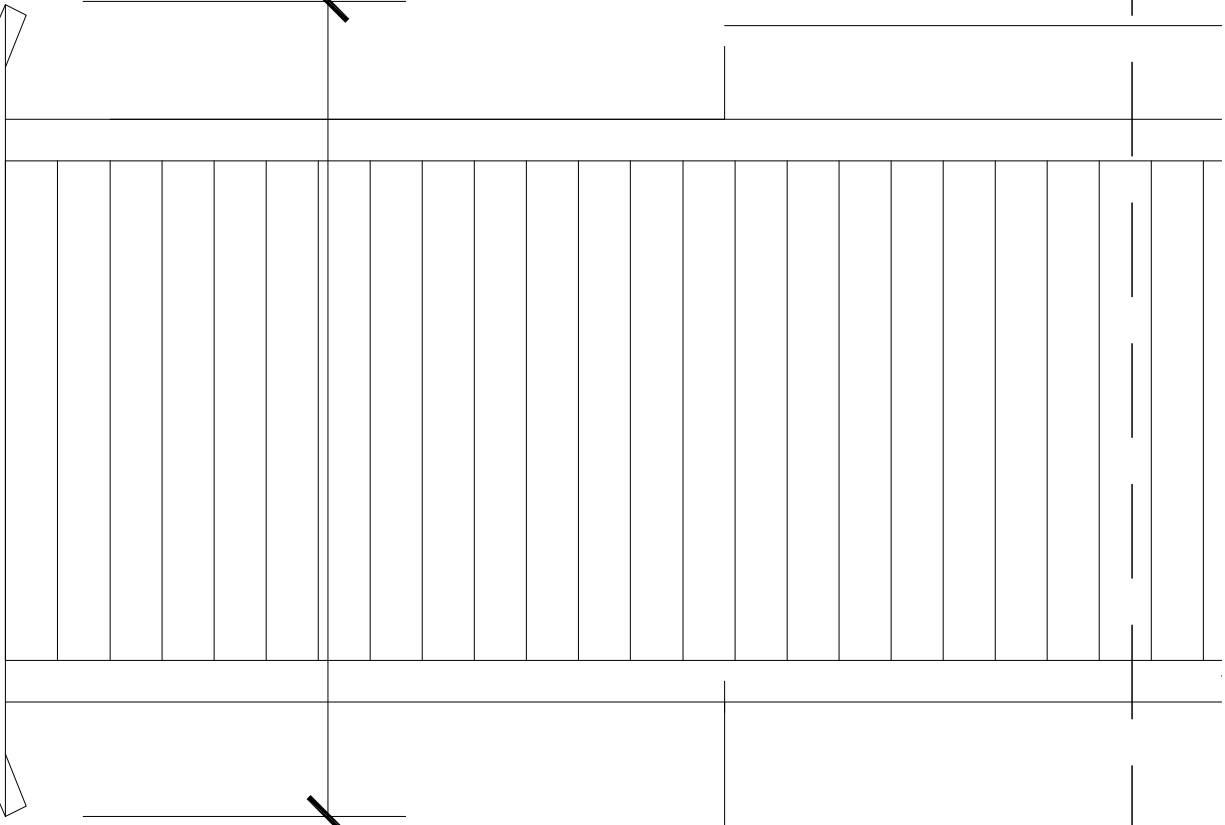
**SIDE 1 - S1-2**

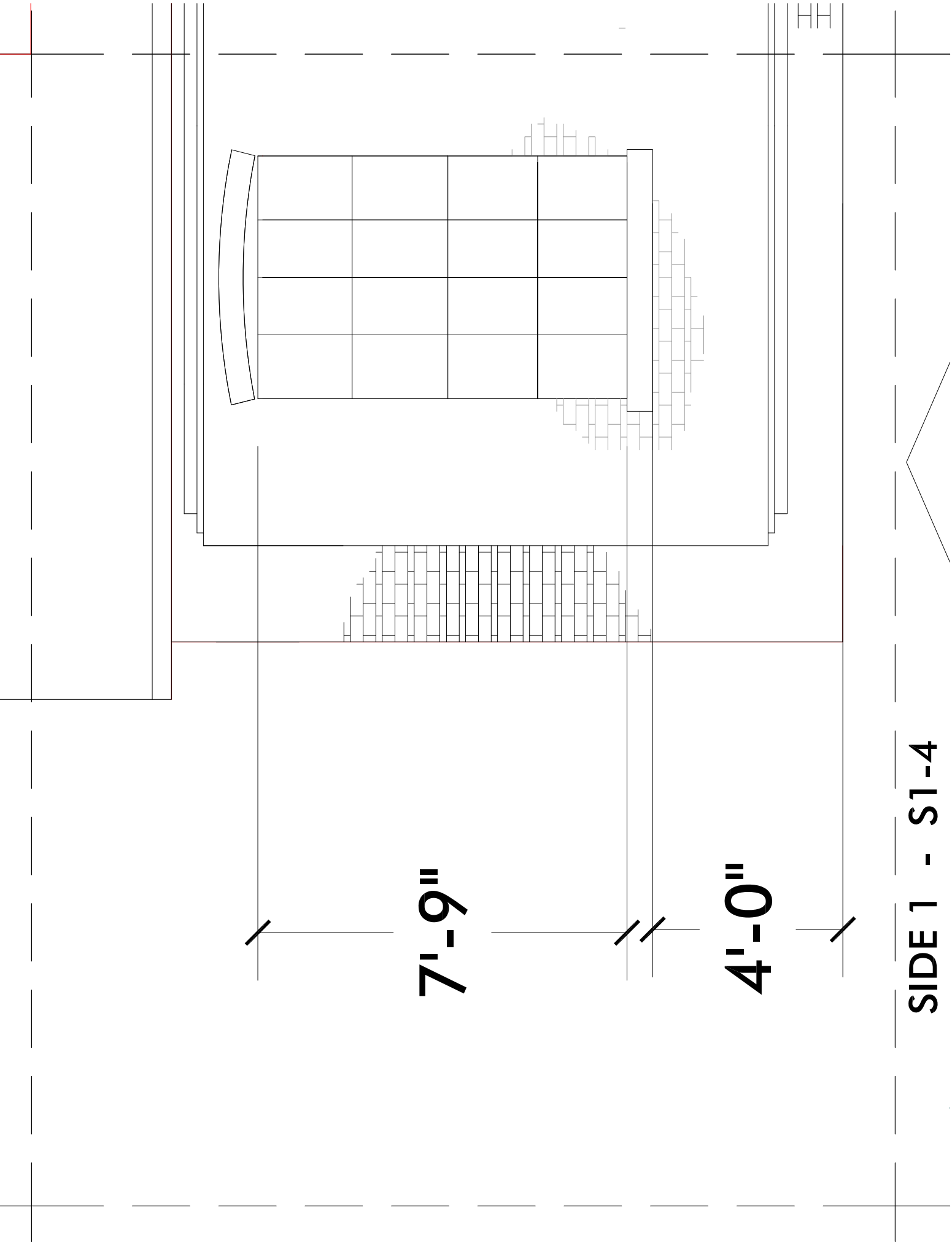


**SIDE 1 - S1-3**

**10'-6"**

**1'-2"**

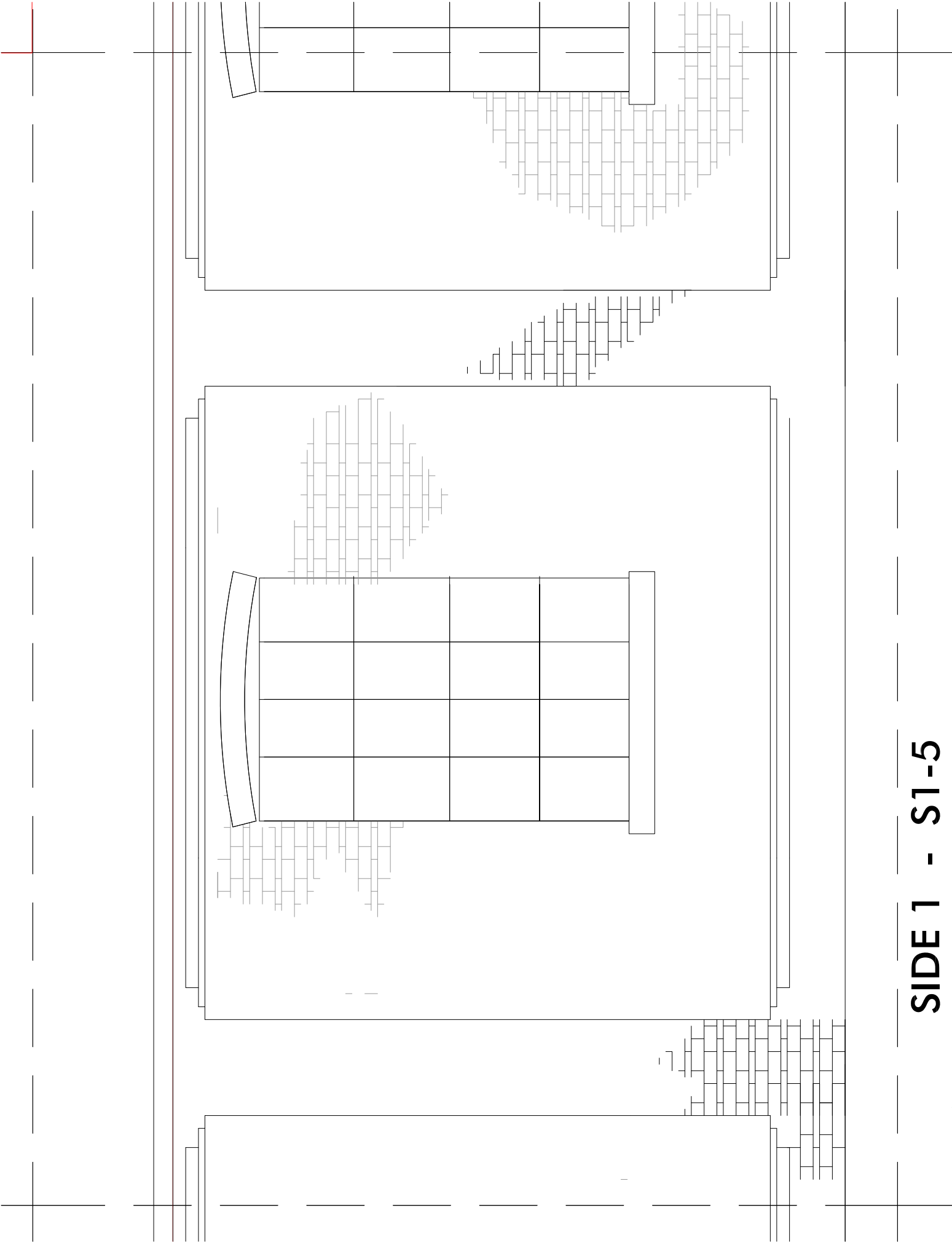




7'-9"

4'-0"

SIDE 1 - S1-4



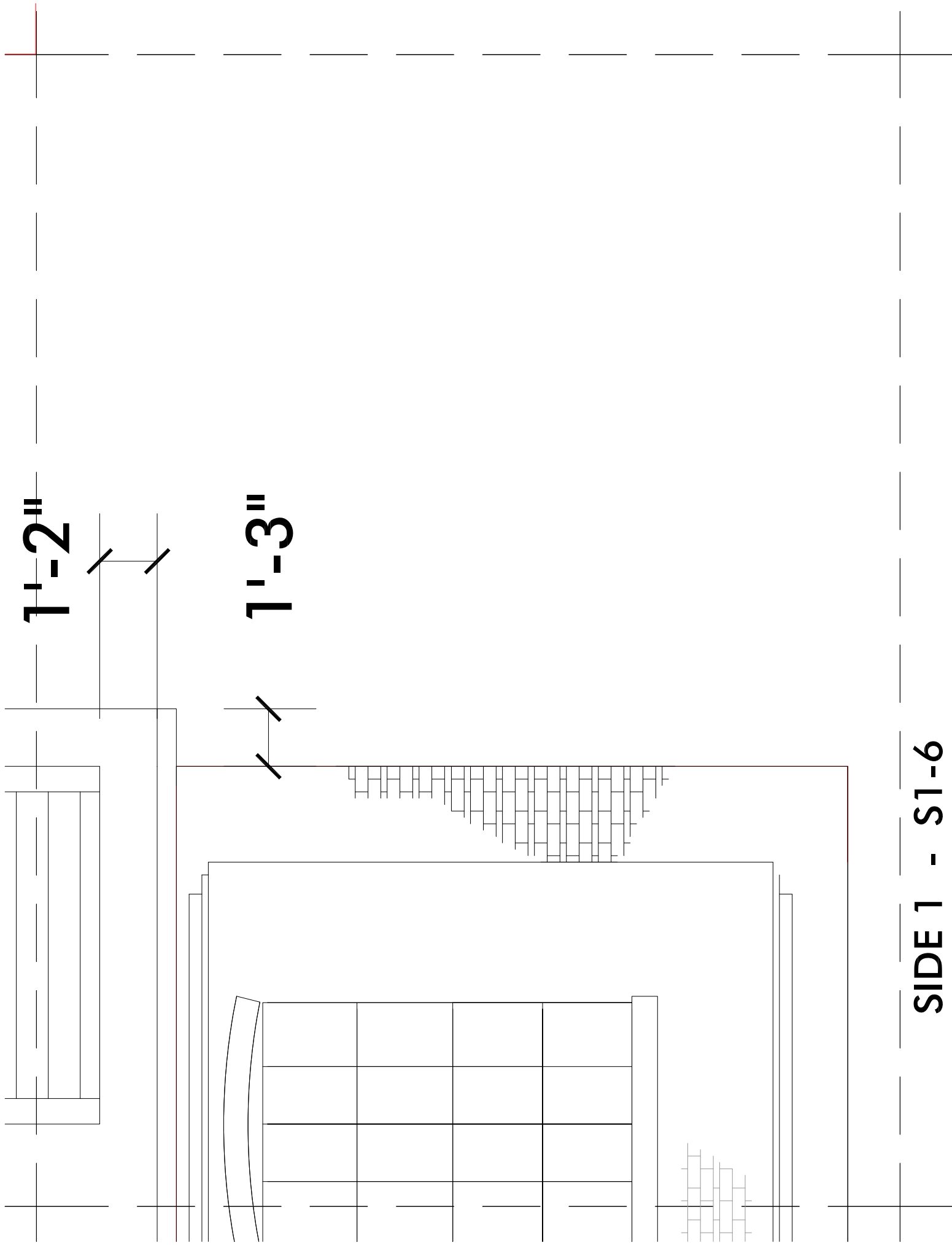
**SIDE 1 - S1-5**



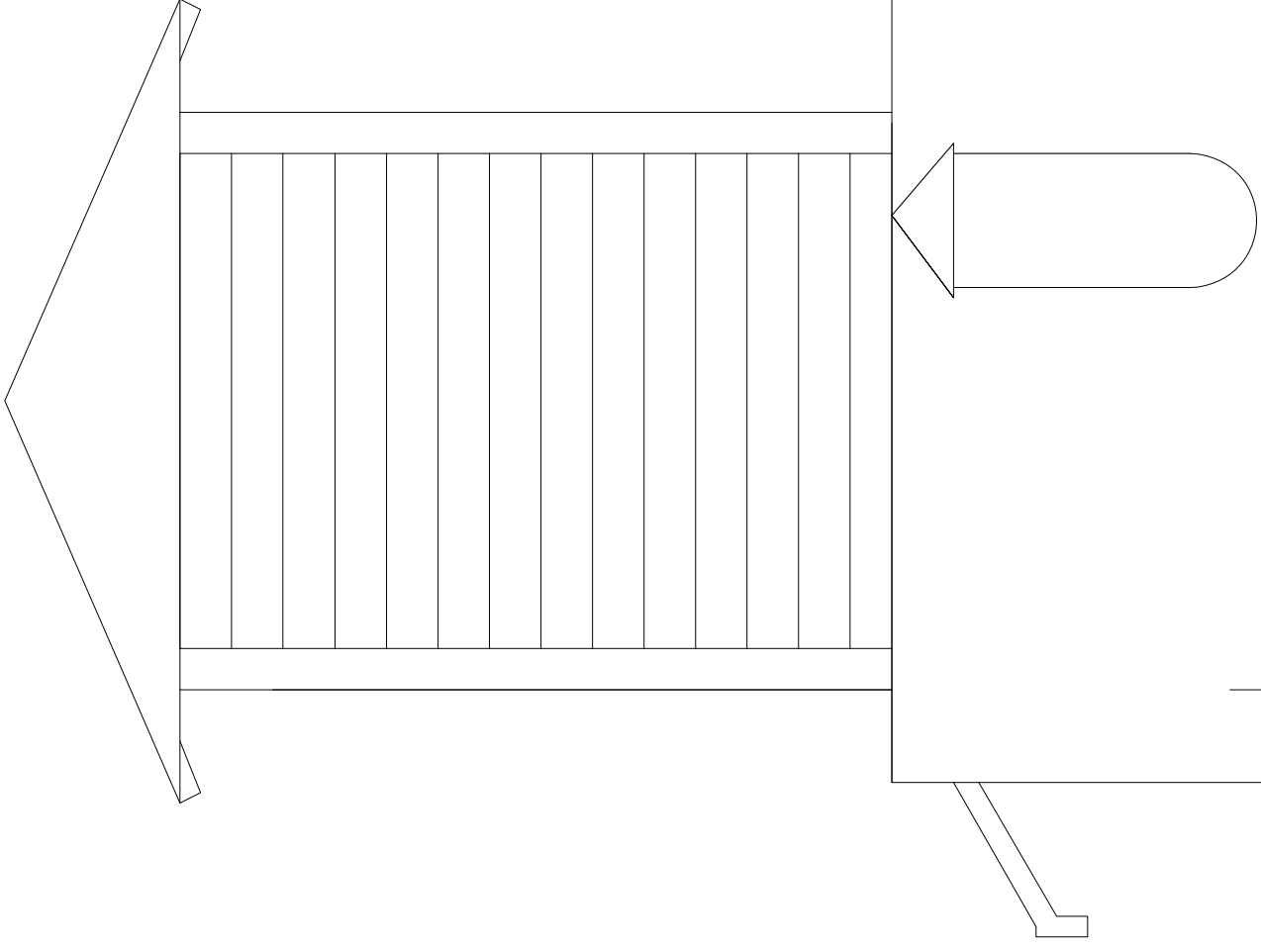
1'-2"

1'-3"

SIDE 1 - S1-6



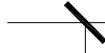
**SIDE 2 - S2-1**

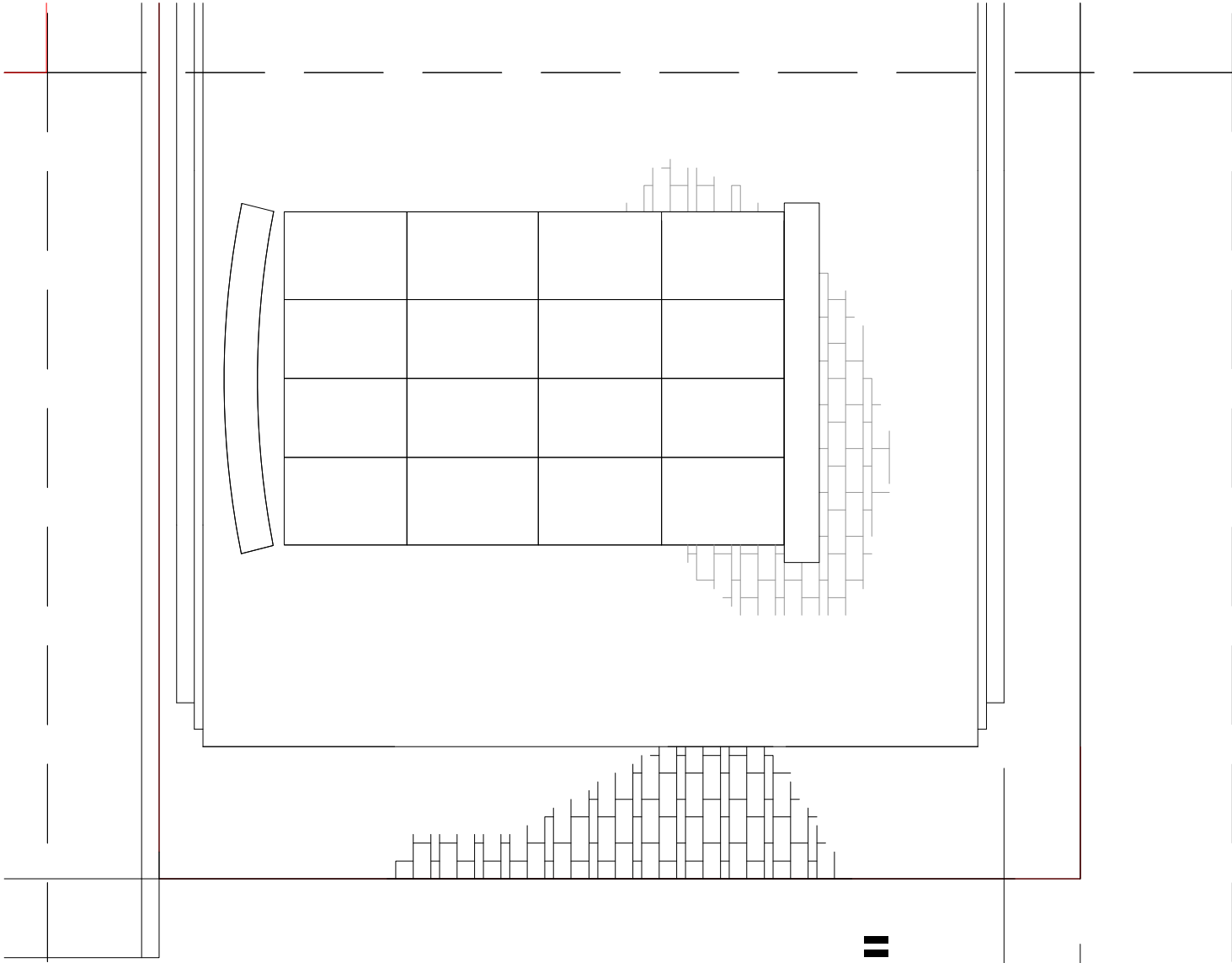


**SIDE 2 - S2-2**

**45'-9"**

**SIDE 2 - S2-3**



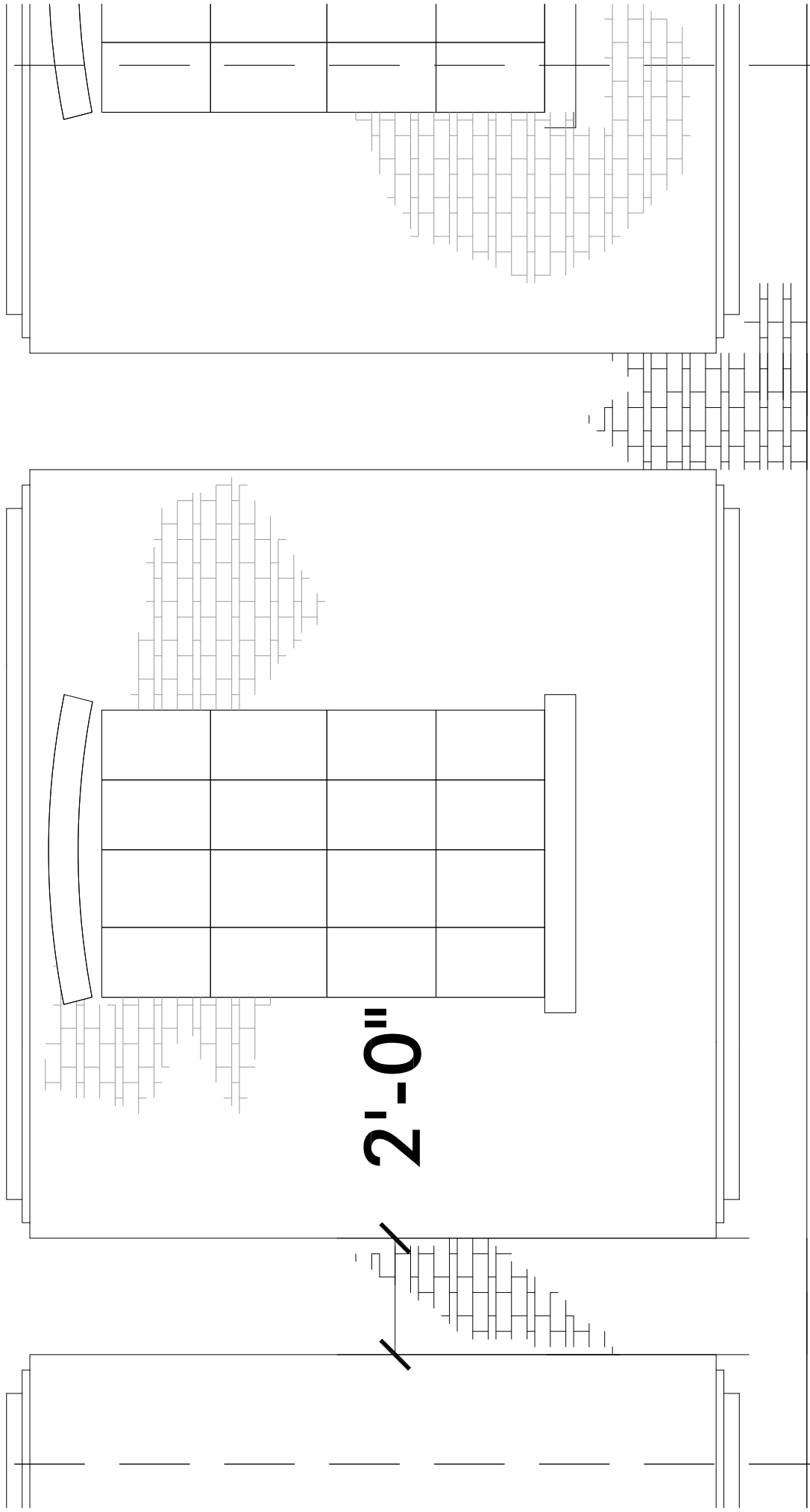


2'-2"

1'-2"

SIDE 2 - S2-4

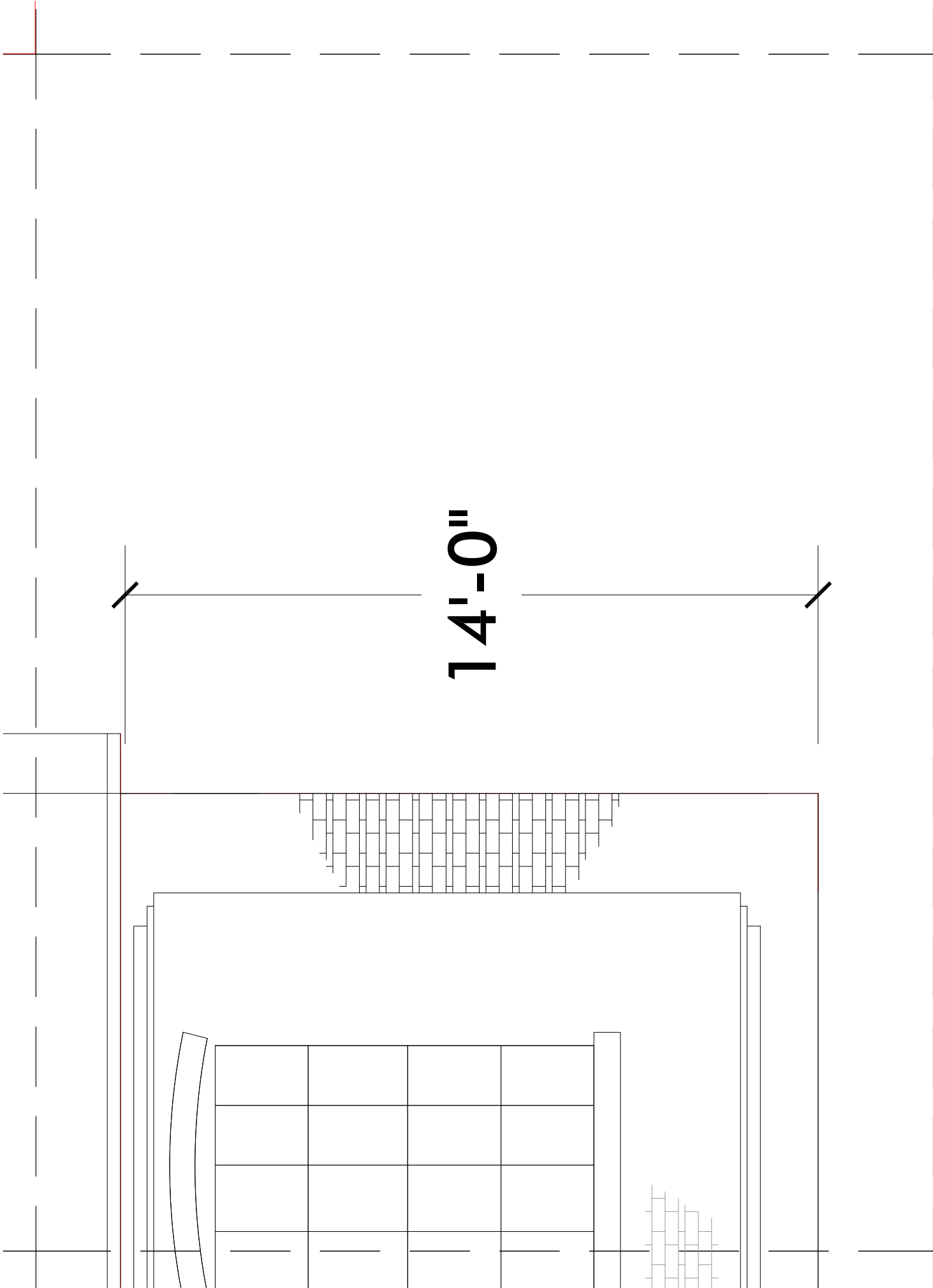
10'



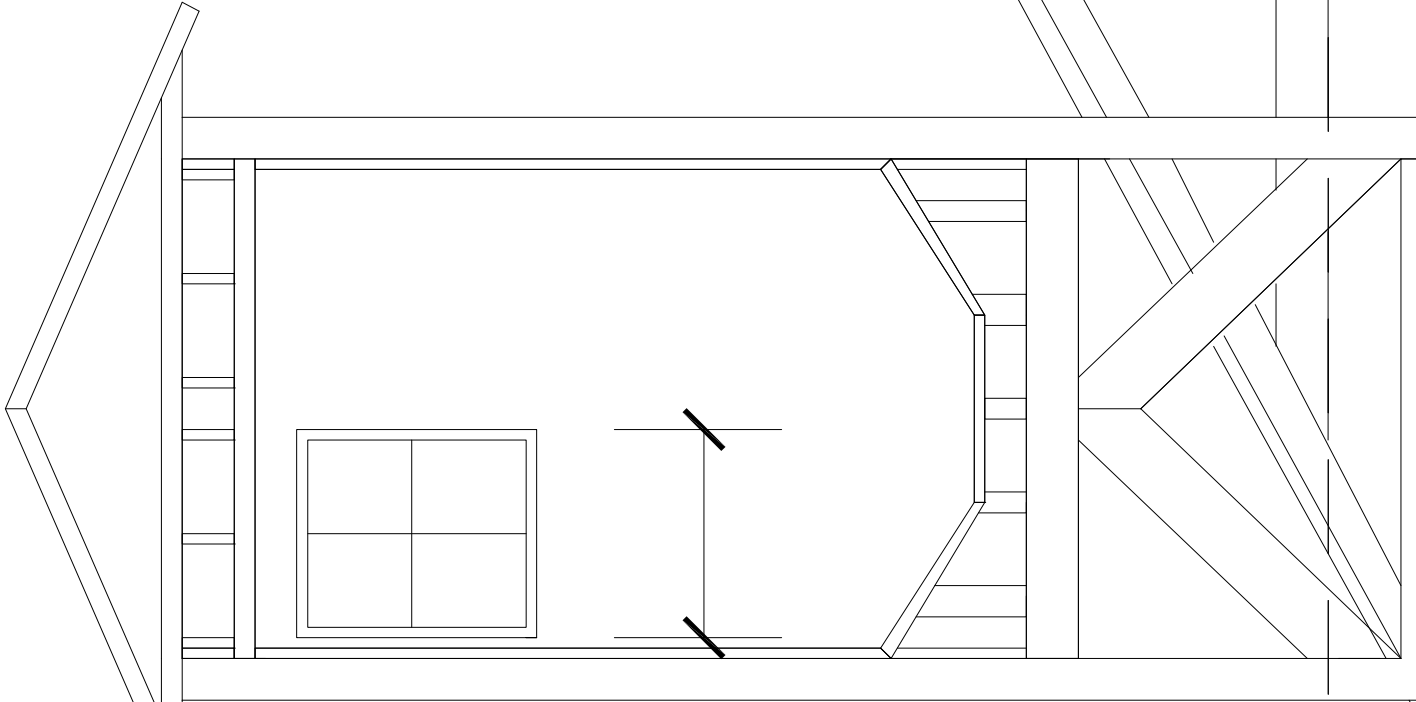
SIDE 2 - S2-5

14'-0"

SIDE 2 - S2-6



**TOWER - T-1**



1'-5"

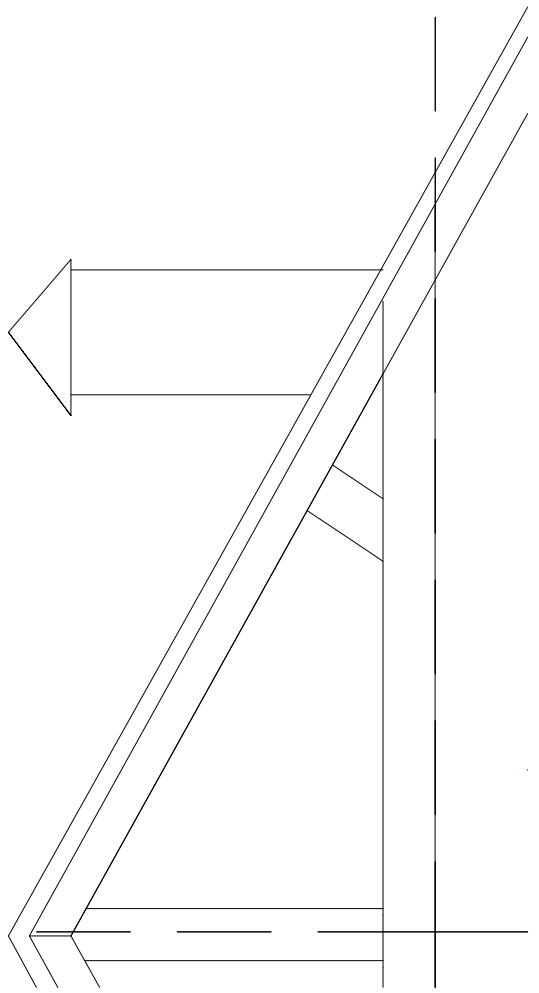
3'-1"

2'-8"

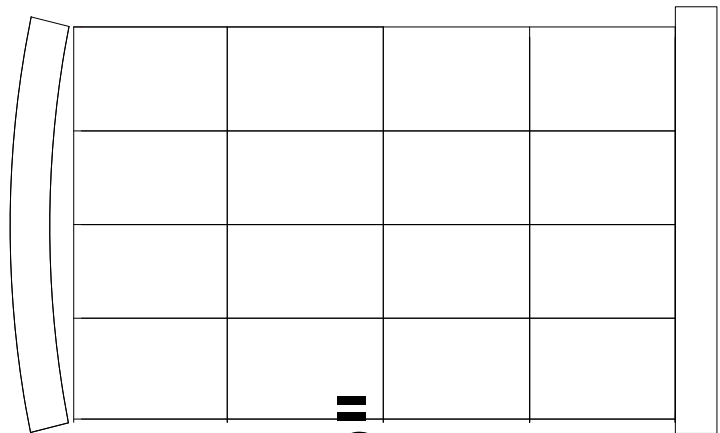


**TOWER - T-2**

**10**



**TOWER - T-3**



**7'-9"**

**5'-0"**