



January



February



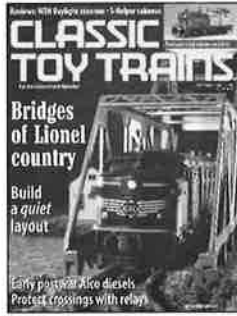
March



May



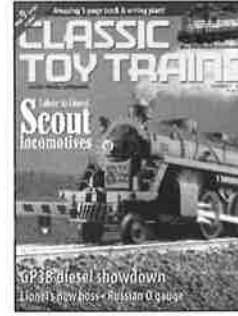
July



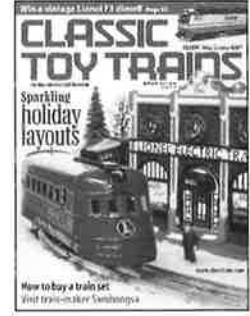
September



October



November



December

**BACK ISSUES:** Limited quantities of all 1999 issues are available at \$4.95 each. Also available at \$4.95 each are Fall 1988; Summer 1989; February, April, June, August, October, and December 1990; April, June, August, and October 1991; August, October, and December 1992; January, March, May, July, and September 1993; January, March, May, July, September, and November 1994; January, May, July, September, November, and December 1995; January, February, May, July, September, and December 1996; February, March, May, July, September, and December 1997; November 1997 is available at \$5.50 each.

Send all orders to Kalmbach Publishing Co., Dept. CK094, 21027 Crossroads Circle, P. O. Box 986, Waukesha, WI 53187-0986, or call toll-free 800-533-6644 (outside the United States and Canada, call 262-796-8776), or visit CTT's web site at [www.classtrain.com](http://www.classtrain.com) and click on "Books & Videos."

Orders must include payment for postage and handling: United States \$3 for fourth class or \$4.50 for UPS; Canada \$5; all other foreign \$10. Maryland, Michigan, Virginia, and Wisconsin residents add 5 percent sales tax to total. Canadian orders add 7 percent GST to total. Payable in U. S. funds. Prices and availability are always subject to change.

# CLASSIC TOY TRAINS®

## INDEX

Volume 12  
1999

©2000 Kalmbach Publishing Co., 21027 Crossroads Circle, Waukesha, WI 53187. No part of this volume may be reprinted without the specific permission of the publisher.

**USING THE INDEX:** Most feature material has been indexed six or more times: by the title under which it was published; under the author's last name; by subject, usually falling under one or more of the CTT subject categories; by the era during which the train(s) described was made; by the gauge or scale of that train(s); and by the manufacturer of that train(s).

An asterisk (\*) preceding an entry indicates a feature by its published title.

### CTT subject categories:

Accessories  
Cars  
Classic Railroads  
Collectors/operators  
Concept and commentary  
Construction and maintenance  
Cover photos  
Display  
Electrical and control  
Historical

Identification and dating  
Interviews  
Layout descriptions  
Lionel: The story  
Locomotives  
Manufacturer  
Sets  
Tinplate prototypes  
Track plans

### CTT departments:

Classic train sets  
Collectible Classics  
Editorials  
News and Notes  
Observation Platform  
Point of View  
Product News  
Product reviews  
Q's & A's

## A

- \*ABCs of relays, The, Mar p78
- Accessories**
- Bridges of Lionel country, The, Sep p64
- Flyer's towering achievement, Jan p94
- New industry from a familiar kit, A, May p96
- Recreating Lionel's scenic plots, Sep p96
- Reviving a Lionel no. 270 bridge, Feb p77
- Standard gauge on a shoestring, Oct p94
- Allen, Steven
- On-line auction guide, Dec p76
- \*Amazing survivor, Jan p112
- Ambrose, Paul V.
- Saluting the Scouts, Nov p70
- \*American Flyer O gauge City of Denver, Mar p62
- \*American Flyer's B6 switcher, Nov p162
- Anderson, John C.
- Time back when, A, Jan p76
- \*Apartment layout, Sep p72
- Armstrong, Stuart
- Lionel's blackened trim mystery, Jul p95
- \*Auction ABCs, May p100

## B

- \*Bad bosses, and how to fix them, Oct p62
- \*Baltimore & Ohio, The, Mar p90
- \*Batting Geeps!, Nov p92
- Beavens, Charles E.
- Turn your Lionel K4 into a true Pacific, Jan p109
- Besougloff, Neil (see also Editorials)
- Planning your holiday layout, Dec p64
- \*Big as life, Feb p78
- \*Big Inch, The, May p154
- \*Big red bridge, The, Sep p60
- Boyette, Wade S.
- Spirit of Christmas past, The, Dec p98
- \*Bridges from the hardware store, Sep p109
- \*Bridges of Lionel country, The, Sep p64
- \*Brighten your observation car with LEDs, Jan p74
- \*Build a wooden arch bridge, Sep p92
- \*Building the MTH showroom layout, Mar p70
- \*Building your own display-style layout, Feb p102
- Butler, Robert S.
- Cast iron classics, May p72

## C

- Caccavo, Jim
- Partner behind MTH trains, A, Dec p70
- Carp, Roger
- Family business, A, Sep p100
- Keeping it in the neighborhood, Jan p88
- Lions like breakfast cereal, too, Jan p115
- Making the jump from O to S, Feb p88
- Welcome to Klumpton!, Nov p62
- Carporelli, Len
- Copy clues, Jul p60
- Cars**
- Big Inch, The, May p154
- Brighten your observation car with LEDs, Jan p74
- Lionel's blackened trim mystery, Jul p95
- Marx of distinction, Jul p90
- Piggybacks on parade, Mar p64
- Repairing Lionel's helicopter and satellite-launching cars, Dec p110
- Repairing Lionel's milk car, May p90
- Repairing Lionel's no. 3361 Lumber Dump Car, Mar p95
- Repairing Lionel's operating boxcars, Oct p62
- Tale of two trainmen, A, Jul p64
- \*Cast iron classics, May p72
- Christianson, Dick
- Father, a son and their trains, A, Oct p96

### Classic Railroads

- Baltimore & Ohio, The, Mar p90
- New York Central, The, Jan p120
- Santa Fe all the way, Dec p104
- Take a ride on the Reading, Oct p86
- UP means Unlimited Power, Jul p98

### Classic trackplans

- Apartment layout, Sep p72
- Grand Trunk Western, The, May p88
- Tinplate Central Lines, The, Nov p87

### Classic train sets

- American Flyer O gauge City of Denver, Mar p62
- Lionel's O-27 Frontier Gift Pack, Oct p92

### Collectible Classics

- American Flyer's B6 switcher, Nov p162
- Big Inch, The, May p154
- Lionel's 156-X locomotive, Jan p131
- Lionel's other B&O F3, Mar p114
- Lionel's SD40, Jul p146

- Lionel's Virginian Rectifier, Feb p122
- Little workhorse, The, Sep p154
- Marx's Budd RDC, Oct p146
- North to Alaska on three rails, Dec p170
- Collectors/operators**
- Anderson, John C., Jan p76
- Boyette, Wade S., Dec p98
- D'Angelo, Gaetano, Jan p88
- Davis, Joe, Oct p70
- Gscheidle, Frank, Nov p78
- Heffner, Robert, Jul p54
- Hidell, William H., Sep p60
- Klump, Howard, Nov p62
- Long, John, Nov p87
- Magnussen, Richard, Feb p82
- Matejka, Mike, Nov p102
- Merritt, Stan, Jul p78
- Moller, Scott, Feb p78
- Patterson, Jim, Dec p80
- Scully, John, Jul p70
- Tashjian, Richard, May p58
- Torgerson, John, Mar p84
- Vertel, Fred and Tom, Oct p96
- Watson, David, Sep p74
- Willard, Craig, Feb p86

### Concept and commentary

- Auction ABCs, May p100
- Old no. 250 rolls again, Dec p115
- On-line auction guide, Dec p76
- Planning your holiday layout, Dec p64
- Workin' on the railroad, Dec p86
- Conner, Michael
- Standard gauge on a shoestring, Oct p94

### Construction and maintenance

- Bad bosses, and how to fix them, Oct p62
- Big red bridge, The, Sep p60
- Build a wooden arch bridge, Sep p92
- Controlling interest, May p64
- Doublehead those steamers!, Jan p86
- Easy steps to a realistic railroad, May p78
- Got a light?, Jul p84
- Having a blast, Nov p108
- Lionel's Ideal Layout, Jul p54
- New industry from a familiar kit, A, May p96
- Planning your holiday layout, Dec p64
- Recreating Lionel's scenic plots, Sep p96
- Repairing Lionel's helicopter and satellite-launching cars, Dec p110
- Repairing Lionel's milk car, May p90
- Repairing Lionel's no. 3361 Lumber Dump Car, Mar p95
- Repairing Lionel's operating boxcars, Oct p62
- Reviving a Lionel no. 270 bridge, Feb p77
- Royal restoration, Oct p82
- Tale of two trainmen, A, Jul p64
- Turn your Lionel K4 into a true Pacific, Jan p109
- Whisper while you work, Sep p84
- \*Controlling interest, May p64
- \*Copy clues, Jul p60
- Corrigan, Peter
- Bridges from the hardware store, Sep p109
- Cover photos**
- Bridges of Lionel country, Sep
- Easy desert layout tips, May
- Forbes, Jim, Dec, Jan, Jul, Mar, May
- How to pick your power pack, Jan
- Lionel display surprise, Feb
- Salute to Lionel Scout locomotives, Nov
- Sparkling holiday layouts, Dec
- Spot the original, Jul
- Steamer showdown, Mar
- Super Standard gauge collection, Oct
- Zuback, William, Feb, Nov, Oct, Sep
- \*Leading the legend (CTT visits Lionel), Feb p60
- Curren, Art
- New industry from a familiar kit, A, May p96

## D

### Display

- Amazing survivor, Jan p112
- Prized display, A, Feb p96
- \*Doublehead those steamers!, Jan p86

## E

- \*Easy steps to a realistic railroad, May p78
- Editorials**
- An old adage is verified, Dec p6
- Another control system, Oct p6
- Auctioningtrains.com, Sep p6
- Kids and display layouts, Mar p6
- O-27 with style, Feb p6
- Neat stuff from the clubs, Nov p6
- Straddling eras, Jul p6
- Want toy train quality? May p6
- What's my train worth? Jan p6
- Eichenberg, Dennis
- ABCs of relays, The, Mar p78

## Electrical and control

- ABCs of relays, The, Mar p78
- Brighten your observation car with LEDs, Jan p74
- Controlling interest, May p64
- Picking your power pack, Jan p60
- Tinplate Central Lines, The, Nov p87
- Watson crossing, The, Sep p82
- \*Elusive, exclusive White's sets, The, Feb p72

## F

- \*Family business, A, Sep p100
- \*Family in 'training', A, Sep p77
- \*Father, a son and their trains, A, Oct p96
- Faust, Jeff
- Tale of two trainmen, A, Jul p64
- Flakowicz, Karol
- Old no. 250 rolls again, Dec p115
- \*Flyer's towering achievement, Jan p94
- \*For the love of Marx, Mar p84
- Formanek, Jerry
- Doublehead those steamers! Jan p86

## G

- \*Garage sale Hudson, A, Mar p97
- \*Get some trains rolling with a starter set, Dec p88
- \*GM switcher, The, Feb p71
- \*Got a light?, Jul p84
- Grabski, Don
- Brighten your observation cars with LEDs, Jan p74
- Grams, John A.
- American Flyer O gauge City of Denver, Mar p62
- Bridges of Lionel country, The, Sep p64
- Family in 'training', A, Sep p77
- K4: Evolution of an engine, Jan p100
- Lionel's 156-X locomotive, Jan p131
- Lionel's O-27 Frontier Gift Pack, Oct p92
- Watson crossing, The, Sep p82
- \*Grand Trunk Western, The, May p88
- Gscheidle, Frank
- Wrong Island Railroad, The, Nov p78

## H

- Hairston, Alfred Jr.
- Safe at home, Feb p48
- Hall, George
- Road of anthracite, The, Jul p70
- Hamler, Ted
- Elusive, exclusive White's sets, The, Feb p72
- \*Happy medium, Feb p82
- \*Having a blast, Nov p108
- \*Hell Gate bridge, Sep p71
- Heffner, Robert
- Lionel's Ideal Layout, Jul p54
- Heiman, Fred
- Ives' Candidate Special, Feb p68
- Hidell, William H.
- Big red bridge, The, Sep p60
- Hilbert, Mike
- Royal restoration, Oct p82
- Historical**
- Amazing survivor, Jan p112
- Baltimore & Ohio, The, Mar p90
- Family business, A, Sep p100
- Lionel Engineers Club, The, Oct p68
- Making the jump from O to S, Feb p88
- New York Central, The, Jan p120
- Santa Fe all the way, Dec p104
- Take a ride on the Reading, Oct p86
- UP means Unlimited Power, Jul p98
- When the lights went out at Lionel, May p76
- \*Hobby of history, A, May p58
- Hockenhill, Jim
- Cyberspace train meet, Jul p28
- Horne, Mark
- Controlling interest, May p64

## I

### Identification and dating

- American Flyer O gauge City of Denver, Mar p62
- American Flyer's B6 switcher, Nov p162
- Big Inch, The, May p154
- Bridges from the hardware store, Sep p109
- Bridges of Lionel country, The, Sep p64
- Cast iron classics, May p72
- Copy clues, Jul p60
- Elusive, exclusive White's sets, The, Feb p72
- Flyer's towering achievement, Jan p94
- Garage sale Hudson, A, Mar p97
- Ives' Candidate Special, Feb p68
- K4: Evolution of an engine, Jan p100
- Lionel's 156-X locomotive, Jan p131
- Lionel's blackened trim mystery, Jul p95
- Lionel's O-27 Frontier Gift Pack, Oct p92
- Lionel's other B&O F3, Mar p114
- Lionel's SD40, Jul p146

- Lionel's Virginian Rectifier, Feb p122
- Little workhorse, The, Sep p154
- Marx of distinction, Jul p90
- Marx's Budd RDC, Oct p146
- North to Alaska on three rails, Dec p170
- Piggybacks on parade, Mar p64
- Repairing Lionel's helicopter and satellite-launching cars, Dec p110
- Repairing Lionel's milk car, May p90
- Repairing Lionel's no. 3361 Lumber Dump Car, Mar p95
- Repairing Lionel's operating boxcars, Oct p62
- Russian dressing, Nov p100
- Saluting the Scouts, Nov p70
- Streamliners for Junior, Jan p68
- Tale of two trainmen, A, Jul p64

### Interviews

- Leading the legend (CTT visits Lionel), Feb p60
- Partner behind MTH trains, A, Dec p70
- \*Ives' Candidate Special, Feb p68

## J-K

- \*K4: Evolution of an engine, Jan p100
- \*Keeping it in the neighborhood, Jan p88
- Keller, Bob
- American Flyer's B6 switcher, Nov p162
- Batting Geeps!, Nov p92
- Get some trains rolling with a starter set, Dec p88
- MTH on the road, Oct p56
- New York Central, The, Jan p120
- Leading the legend (CTT visits Lionel), Feb p60
- Steam showdown, Mar p54
- Klein, Raymond R.
- Building the MTH showroom layout, Mar p70

## L

### Layout descriptions (By owner, when applicable, or layout name. T indicates track plan included, followed by gauge or scale designation, then manufacturer.)

- Anderson, John C. (T, O, Lionel), Jan p76
- Big Mobile Train Layout (T, O, MTH), Oct p56
- Boyette, Wade S. (T, O, multiple), Dec p98
- CTT project layout, Christmas village (T, O, multiple), Dec p64
- CTT project layout, desert (O, multiple), May p78
- Davis, Joe (Standard, Lionel), Oct p70
- Gscheidle, Frank (T, O, multiple), Nov p78
- Heffner, Robert (T, O, Lionel), Jul p54
- Lionel D-1601 display layout (T, O, Lionel), Jan p112
- Lionel D-265 display layout (T, O, Lionel), Feb p102
- Lookout Management office layout (T, O, Lionel), Sep p84
- Magnussen, Richard (T, O, Lionel), Feb p82
- Matejka, Mike (T, O, multiple), Nov p102
- Moller, Scott (T, S, American Flyer), Feb p78
- MTH showroom layout (T, O, standard, MTH), Mar p70
- Schafer, Dale (O, Lionel), Feb p96
- Scully, John (T, O, multiple), Jul p70
- Vertel, Fred and Tom (T, O, multiple), Oct p96
- Watson, David (O, multiple), Sep p74
- Willard, Craig (T, O, multiple), Feb p86
- Lesser, Joe
- Whisper while you work, Sep p84
- Lewis, Eric G.
- In praise of junkers, Dec p36
- \*Like father, like daughter, Nov p102
- Lionel: The story**
- Family business, A, Sep p100
- Making the jump from O to S, Feb p88
- When the lights went out at Lionel, May p76
- \*Lionel Engineers Club, The, Oct p68
- \*Lionel in the making, Oct p80
- \*Lionel's blackened trim mystery, Jul p95
- \*Lionel's Ideal Layout, Jul p54
- \*Lionel's 156-X locomotive, Jan p131
- \*Lionel's other B&O F3, Mar p114
- \*Lionel's O-27 Frontier Gift Pack, Oct p92
- \*Lionel's SD40, Jul p146
- \*Lionel's Virginian Rectifier, Feb p122
- \*Lions like breakfast cereal, too, Jan p115
- Lissi, Joe
- Recreating Lionel's scenic plots, Sep p96
- \*Little workhorse, The, Sep p154
- \*Little world of fun, Feb p86
- Locomotives, toy train**
- American Flyer's B6 switcher, Nov p162
- Batting Geeps!, Nov p92

Cast iron classics, May p72  
Copy clues, Jul p60  
Doublehead those steamers!, Jan p86  
Garage sale Hudson, A, Mar p97  
GM switcher, The, Feb p71  
Having a blast, Nov p108  
K4: Evolution of an engine, Jan p100  
Lionel's 156-X locomotive, Jan p131  
Lionel's other B&O F3, Mar p114  
Lionel's SD40, Jul p146  
Lionel's Virginian Rectifier, Feb p122  
Little workhouse, The, Sep p154  
Marx's Budd RDC, Oct p146  
Pennsy's K4, The, Jan p107  
Royal restoration, Oct p82  
Saluting the Scouts, Nov p70  
Steam showdown, Mar p54  
Turn your Lionel K4 into a true Pacific, Jan p109  
Long, John  
New Lionel, The, Sep p32  
Tinplate Central Lines, The, Nov p87  
\*Long on variety, Sep p74

## M

\*Making the jump from O to S, Feb p88  
**Manufacturer: American Flyer/Gilbert**  
American Flyer O gauge City of Denver, Mar p62  
American Flyer's B6 switcher, Nov p162  
Cast iron classics, May p72  
Elusive, exclusive White's sets, The, Feb p72  
Flyer's towering achievement, Jan p94  
Garage sale Hudson, A, Mar p97  
Making the jump from O to S, Feb p88  
Never a train collector, Jul p78  
Royal restoration, Oct p82  
Still in training after all these years, Dec p80  
Tale of two trainmen, A, Jul p64  
**Manufacturer: Aristo-Craft**  
Get some trains rolling with a starter set, Dec p88  
**Manufacturer: Bachmann**  
Get some trains rolling with a starter set, Dec p88  
**Manufacturer: Ives**  
Ives' Candidate Special, Feb p68  
**Manufacturer: K-Line**  
Battling Geeps!, Nov p92  
Get some trains rolling with a starter set, Dec p88  
**Manufacturer: Lehmann/LGB**  
Get some trains rolling with a starter set, Dec p88  
**Manufacturer: Lionel Corp.**  
Amazing survivor, Jan p112  
Big Inch, The, May p154  
Bridges of Lionel country, The, Sep p64  
Building your own display-style layout, Feb p102  
Copy clues, Jul p60  
Family business, A, Sep p100  
Hobby of history, A, May p58  
K4: Evolution of an engine, Jan p100  
Lionel Engineers Club, The, Oct p68  
Lionel's 156-X locomotive, Jan p131  
Lionel's blackened trim mystery, Jul p95  
Lionel's Ideal Layout, Jul p54  
Lionel's O-27 Frontier Gift Pack, Oct p92  
Little workhouse, The, Sep p154  
Making the jump from O to S, Feb p88  
Never a train collector, Jul p78  
North to Alaska on three rails, Dec p170  
Old no. 250 rolls again, Dec p115  
Prized display, A, Feb p96  
Repairing Lionel's helicopter and satellite-launching cars, Dec p110  
Repairing Lionel's milk car, May p90  
Repairing Lionel's no. 3361 Lumber Dump Car, Mar p95  
Repairing Lionel's operating boxcars, Oct p62  
Reviving a Lionel no. 270 bridge, Feb p77  
Saluting the Scouts, Nov p70  
Standard gauge on a shoestring, Oct p94  
Steam showdown, Mar p54  
Streamliners for Junior, Jan p68  
Turn your Lionel K4 into a true Pacific, Jan p109  
Welcome to Klumppton!, Nov p62  
When the lights went out at Lionel, May p76  
**Manufacturer: Lionel modern (MPC/Fundimensions, LTI & LLC)**  
Battling Geeps!, Nov p92  
Get some trains rolling with a starter set, Dec p88  
Leading the legend (CIT visits Lionel), Feb p60  
Lionel in the making, Oct p80  
Lionel's other B&O F3, Mar p114

Lionel's SD40, Jul p146  
Lionel's Virginian Rectifier, Feb p122  
New industry from a familiar kit, A, May p96  
Piggybacks on parade, Mar p64  
Steam showdown, Mar p54  
**Manufacturer: Märklin**  
Get some trains rolling with a starter set, Dec p88  
**Manufacturer: Marx**  
For the love of Marx, Mar p84  
Marx of distinction, Jul p90  
Marx's Budd RDC, Oct p146  
**Manufacturer: MTH**  
Battling Geeps!, Nov p92  
Brighten your observation car with LEDs, Jan p74  
Building the MTH showroom layout, Mar p70  
Get some trains rolling with a starter set, Dec p88  
MTH on the road, Oct p56  
Partner behind MTH trains, A, Dec p70  
Steam showdown, Mar p54  
**Manufacturer: Stanlo**  
Bridges from the hardware store, Sep p109  
**Manufacturer: Weaver**  
Battling Geeps!, Nov p92  
**Manufacturer: Williams**  
Battling Geeps!, Nov p92  
Magnussen, Richard  
Happy medium, Feb p82  
\*Marx of distinction, Jul p90  
\*Marx's Budd RDC, Oct p146  
Matejka, Mike  
Like father, like daughter, Nov p102  
McCaughy, Noel V.  
Flyer's towering achievement, Jan p94  
McGuirk, Martin  
Grand Trunk Western, The, May p88  
Merritt, Stan  
Never a train collector, Jul p78  
Miller, Hal  
Marx's Budd RDC, Oct p146  
Mohr, Bill  
Doublehead those steamers!, Jan p86  
Moller, Scott  
Big as life, Feb p78  
\*MTH on the road, Oct p56

## N

\*Never a train collector, Jul p78  
\*New industry from a familiar kit, A, May p96  
\*New York Central, The, Jan p120  
**News & Notes photos: Locomotives, steam**  
0-2-2, large scale, Märklin, Oct 23  
2-6-6-6 Allegheny, O, Lionel, Sep p27  
4-6-4 Crusader, O, Weaver, Feb p19  
**News & Notes photos: Locomotives, diesel**  
Alco RS-11, O, multiple road names, Weaver, May p31  
Alco RS-11, O, Nickel Plate Road, Weaver, Oct p23  
Alco C-420, O, prototypes, Lionel, Nov p23  
EMD BL-2, O, Boston & Maine, Williams, Dec p23  
EMD F3, Atwater Models, RF&P, Jan p21  
EMD GP38, O, Williams, Jul p25  
EMD SD70, O, prototype, Lionel, Nov p24  
**News & Notes photos: Locomotives, other**  
EMD F3 shells at paint rack, O, Lionel, Nov p24  
**News & Notes photos: Miscellany**  
Auction photo, nos. 2625, 2627 and 2628 passenger cars, Mar p25  
Auction photo, Lionel 1912 electric, Oct p23  
Auction photo, Lionel dealer sign, Feb p21  
Auction photo, Lionel no. 9836 set, Sep p29  
Bi-plane, O, Model Power, Mar p23  
Boy Scout merit badge program, Oct p21  
Bronzed Lionel steam engine, O, Nov p26  
Classic Toy Trains buttons, Sep p27  
Chicagoland Lionel Club picnic, Oct p22  
Christmas train set, O, Marx, Dec p25  
Family Friend photo, Mar p24  
Family Friend photo, Dec p24  
Joe DiMaggio/Model Builder cover, Jul p24  
Lionel staff members Bob Grubba and Ken Silvestri, Nov p25  
Lionel theme Enesco bank, Mar p24  
Lionel ZW, pre-production sample, Dec p25  
Layout helixes, May p32  
Layout helixes, Sep p28  
Maddox, Richard, new Lionel President, Oct p21  
Maddox, Richard, Nov p23  
MTH books, Jul p23  
Odyssey motor, O, Lionel, Jan p19  
Police car, 1957 model, O, Road Champs, Mar p23

Prototype 3-rail photo, Feb p20  
Pumpkin train, O, Nov p26  
Signs, O, The Ink Well, Feb p19  
Staff photo: Riccioli, Jim, Mar p25  
Staff photo: Sanders, Katie, Jul p24  
White's boxcar presented to museum, Jan p20  
**News & Notes photos: Rolling Stock**  
Boxcar, Amtrak REA Express, O, Weaver custom car, Feb p20  
Caboose, Milwaukee Road, S-Helper Service, May p31  
\*North to Alaska on three rails, Dec p170

## O

Obermiller, David  
Garage sale Hudson, A, Mar p97  
**Observation Platform**  
Making 'em like they used to, Feb p154  
Real showdown, The, Mar p146  
Standard Railroad of the World, The, Jan p178  
\*Old no. 250 rolls again, Dec p115  
\*On-line auction guide, Dec p76  
Osterhoff, Robert J.  
Lionel Engineers Club, The, Oct p68  
When the lights went out at Lionel, May p76

## P

Palumbo, Lou  
Amid the relics, Nov p36  
\*Partner behind MTH trains, A, Dec p70  
Patterson, Jim  
Still in training after all these years, Dec p80  
Patterson, Julie  
Still in training after all these years, Dec p80  
Pauling, Fred  
Marx of distinction, Jul p90  
\*Pennsy's K4, The, Jan p107  
\*Picking your power pack, Jan p60  
\*Piggybacks on parade, Mar p64  
\*Planning your holiday layout, Dec p64  
Plummer, Ray L.  
Repairing Lionel's helicopter and satellite-launching cars, Dec p110  
Repairing Lionel's milk car, May p90  
Repairing Lionel's no. 3361 Lumber Dump Car, Mar p95  
Repairing Lionel's operating boxcars, Oct p62  
\*Prized display, A, Feb p96  
**Point of View**  
A Berkshire is reborn, Jan p44  
Amid the relics, Nov p36  
Behind the counter, May p22  
Cyberspace train meet, Jul p28  
In praise of junkers, Dec p36  
Laughter at Lionel, Mar p32  
Safe at home, Feb p48  
The new Lionel, Sep p32  
Trains and Cars, Oct p46  
**Product News photos: Locomotives, diesel**  
Alco FA, O, Rock Island, Williams, Dec p44  
Doodlebug diesel car, O, Baltimore & Ohio, MTH, Feb p36  
EMD F unit, large scale, Baltimore & Ohio, LGB, Feb p36  
EMD F units, S, Burlington and New York Central, S-Helper service, Feb, p37  
EMD F59, O, Amtrak, MTH, Nov p42  
EMD GP3, S, New York Central, American Flyer, Dec p40  
EMD GP9, O, Great Northern, MTH, Oct p32  
EMD GP38, O, CP Rail/Illinois Central Gulf, Williams, Jul p32  
EMD GP38, O, Pennsylvania, Weaver, May p39  
EMD NW2, O, Union Pacific, MTH, Feb p37  
EMD SD90MAC, O, Norfolk Southern and Union Pacific, Williams, Nov p38  
EMD SW7, S, New York Central, S-Helper Service, Oct p32  
GE U25B, O, Burlington Northern and Lehigh Valley, Weaver, Mar p36  
No. 57 AEG Switcher, O, Lionel, Feb p36  
Phantom II, O, Lionel, Feb p40  
**Product News photos: Locomotives, steam**  
2-4-0, large scale, Denver & Rio Grande, Hartland Locomotive Works, Jan p40  
2-6-6-2, large scale, Sumpter Valley, LGB, Jan p32  
4-4-0, large scale, Denver & Rio Grande, Hartland Locomotive Works, Jan p40  
4-4-4, O, P.O., Ace Trains, Oct p38  
4-6-2, O, New York Central, K-Line, Feb p 40  
4-6-2, O, Reading Crusader, K-Line, Sep p46  
4-6-2, S, Milwaukee Road Chippewa, American Models, Dec p40  
4-6-4, Dept. 56, O, Lionel, Oct p33  
4-6-4, O, Santa Fe, Pecos River Brass, Nov p39  
4-8-4, O, Southern Pacific Daylight, MTH, May p39  
Climax, large scale, Bachmann, Dec p40  
**Product News photos: Locomotives, electric**  
CE Rectifier, O, New Haven, Williams, Oct p33  
New York Rapid Transit Set, O, Marx, Jul p33  
P2 boxcab, O, New York Central, MTH, Sep p36  
P5a electric, O, Pennsylvania, 3rd Rail, Nov p44  
**Product News photos: Rolling stock, freight**  
Assorted rolling stock, O, K-Line, Feb p42  
Assorted rolling stock, O, Industrial Rail, Feb p44  
Assorted rolling stock, O, Industrial Rail, Dec p40  
Assorted rolling stock, O, K-Line, Oct p36  
Bay-window caboose, O, New York Central, Marx, Jan p33  
Cabooses, O, Western Maryland, Brass Works, Jan p38  
Boxcar, large scale, Bangor & Aroostook, USA Trains, Mar p37  
Boxcar, large scale, Y2K Compliance, USA Trains, Sep p46  
Boxcar, O, Amtrak Express, Williams, Mar p36  
Boxcar, O, Great Northern, K-Line, May p42  
Boxcar, O, "I love toy trains," MTH, Sep p40  
Boxcar, O, Illinois Central, Weaver, Jul p38  
Boxcar, O, Minneapolis, Northfield & Southern, Weaver, Jul p36  
Boxcar, O, Missouri-Kansas-Texas, Weaver, Sep p42  
Boxcar, O, New Haven, Marx, Nov p44  
Boxcar, O, Norfolk & Western Express, Weaver custom car, Mar p40  
Boxcar, O, Santa Fe, Marx, Jan p33  
Boxcar, O, Southern Railway, Weaver, Jul p36  
Boxcar, O, Tennessee, Alabama & Gulf, United Model Distributors, Mar p37  
Boxcar, O, Timken, Dec p46  
Boxcar, O, University of Nebraska, Weaver custom car, Nov p46  
Boxcars, O, Boston & Maine and Ralston, Atlas O, Nov p39  
Boxcars, O, Florida East Coast and Lackawanna, Lionel, Sep p40  
Boxcars, O, Lionel 6464-series no. VIII, Nov p46  
Boxcars, O, New York Central and Pittsburgh & Lake Erie, Weaver, May p38  
Boxcars, O, New York Central and Southern, Pecos River Brass, Dec p41  
Boxcars, O, Reading and Pennsylvania RRs, Weaver, Jul p44  
Boxcars, O, Southern Pacific and Union Pacific, Lionel, Jul p40  
Flatcar with load, O, Lionel, Feb p37  
Flatcar with load, O, Kansas City Southern, Marx, Sep p36  
Flatcar with trailer, O, Milwaukee Road, Lionel, Dec p46  
Freight car set, O, Jersey Central, MTH, Dec p41  
Gondola with load, Standard gauge, MTH, Feb p40  
Hopper, O, L&N, O, Weaver, Oct p40  
Hopper, S, Cedar Heights Clay, S-Helper Service, Dec p44  
Hoppers, O, Pennsylvania, Weaver, May p39  
Hoppers, S, assorted road names, S Scale America, Dec p41  
Hot metal car, O, MTH, Feb p44  
Milk car, O, Borden's, Lionel, Feb p42  
Operating boxcar, O, Burlington Route, Lionel, Nov p48  
Refrigerator car, large scale, Holiday, USA Trains, Jan p32  
Refrigerator car, large scale, Skellig Cheese, USA Trains, Mar p37  
Refrigerator car, O, Dr. Pepper, Weaver custom car, Mar p42  
Refrigerator car, O, Old Slugger Beer, Lonesome Whistle train shop, Jul p40  
Rotary snow plow, O, Chicago & North Western, MTH, Feb p44  
Stock cars, O, Burlington and Rio Grande, Marx, Dec p44  
Tank car, 8,000-gallon, O, Great Train Shows, MTH, Sep p37  
Tank car, O, Domino sugar, Weaver, Nov p48

Tank cars, 10,000 gallon, O, Atlas O, Feb p44  
Tank cars, O, assorted road names, United Model Distributors, Mar p42  
Tank cars, O, assorted road names, United Model Distributors, Jul p33  
Tank cars, S, assorted road names, Des Plaines Hobbies, Nov p39  
Postage stamp commemorative boxcar, O, Lionel, Jan p33  
Woodside refrigerator car, large scale, USA Trains, Sep p37  
Wood-sided refrigerator cars, O, Heinz, K-Line, Nov p39  
**Product News photos: Rolling stock, passenger**  
Amtrak Superliner, O, MTH, Jul p32  
New York Central passenger set, O, Marx, May p42  
**Product News photos: Structures**  
Gas station diorama, large scale, Model Rectifier Corp., Sep p37  
House and platform, O, Model Power, Mar p37  
Interlocking tower, O, W.K. Walthers, Mar p44  
Mini-Graft-style structures, S, Bill Parr's Hobby Supply, Mar p44  
Old west-style structures, large scale, Piko, Mar p40  
Truss bridge, O, Model Power, Jan p33  
**Product News photos: Miscellany**  
Airplane, 1:48 scale, Toymark Co., Sep p44  
Block Control Device, Oct p40  
Block signal, O, MTH, May p46  
Book, Famous American Flyer Trains, Sep p37  
Cargo detail items, O, Ink Well, Mar p37  
Ceiling mounted train system, multiple gauges, Jules Toy Trains, Jan p36  
Christmas ornaments, Hallmark Cards, Nov p38  
Clock, Emson, Oct p42  
Crossing signal, O, MTH, May p46  
Culvert loader, O, Lionel, May p44  
Culvert loads for flatcars, O, Western Hobbycraft, May p39  
Die-cast autos, 1:43 scale, Road Champs, Jan p32  
Die-cast autos, 1:43 scale, Maisto, Jul p36  
Die-cast autos, 1:64 scale, Road Champs, Oct p38  
Die-cast crossing warnings, large scale, MTH, Nov p48  
Die-cast emergency vehicles, O, Ink Well, Dec p44  
Die-cast REA trucks, O, Die-Cast Direct, Jan p40  
Die-cast trucks, O, Ink Well, Oct p42  
Get-to-it pickup tongs, John Magnotti, Jul p38  
Illuminated billboards, Oct p36  
Illuminated building signs, O, Miller Engineering, Dec p46  
Landscape material, O, Brummy's Landscape Express, Mar p42  
Layout scenery cleaner, multiple gauges, Scene Clean, May p44  
Lionel collector cards, Artan Enterprises, May p42  
Lionel Collector Cards Series II, Duo Cards, Sep p42  
Lionel F3 musical bank, Enesco, Jul p33  
Lionel puzzle, Hallmark Cards, Sep p42  
Motor tool, Ryobi International, Jul p38  
Motorized handcar, Coca-Cola bears, O, K-Line, Feb p42  
QS3000 board, QSIndustries, Nov p42  
Rubber ties, O, Oct p36  
Smoke stack caps, O, Griffen Murphy, Jan p38  
Software for layout decoration, Evan Designs, Sep p44  
Switches, O, Ross Custom switches, May p39  
Telegraph poles, large scale or O gauge, MTH, Oct p40  
The Max 600-watt transformer, O, Mainline Industries, Jan p36  
Three-dimensional steam engine front, John Magnotti, May p46  
Track Bed roadbed by Woodland Scenics, Oct p33  
Transport cases, Cal-Specialty Products, Jul p40  
Tunnel portal, O, Chooch Enterprises, May p38  
**Product reviews: Locomotives, steam**  
2-4-0, large scale, Hartland Locomotive Works, Jul p114  
2-6-0, large scale, Marklin, Jan p138

4-4-0, large scale, Hartland Locomotive Works, Oct p120  
4-6-0, O, Camelback, MTH, Nov p118  
4-6-2, O, Santa Fe Valley Flyer, Weaver, Feb p114  
4-6-4, O, New York Central Commodore Vanderbilt, MTH, Jul p104  
4-6-4, O, New York Central, K-Line, May p106  
4-6-4, O, New York Central, Lionel, Dec p128  
4-6-4, O, New York Central, Williams, May p110  
4-8-4, O, Santa Fe, MTH, Oct p108  
4-8-4, O, Southern Pacific Daylight, Lionel, Mar p100  
4-8-4, O, Southern Pacific Daylight, MTH, Sep p112  
4-8-8-2, O, cab-forward, 3rd Rail, Mar p104  
6-4-4-6, Pennsylvania S1, 3rd Rail, Nov p128  
**Product Reviews: Locomotives, diesel**  
EMD doodlebug rail car, O, MTH, Mar p108  
EMD E8, O, MTH, Oct p112  
EMD GP38-2, large scale, USA Trains, Sep p122  
EMD GP60M, O, Santa Fe, MTH, Jan p134  
EMD NW2 no. 6250, O, Lionel, Sep p117  
EMD SD90MAC, O, Union Pacific, Williams, Dec p132  
EMD SW7/9, O, Atlas O, Feb p106  
GE 44-tonner switcher, large scale, USA Trains, May p117  
GE Dash 9 (C44-9W), O, 3rd Rail, Jan p139  
**Product Reviews: Locomotives, electric**  
EMD/ASEA AEM7, Amtrak, O, Atlas O, Dec p120  
GE E60, O, Williams, Jul p109  
GE Rectifier, O, Williams, Nov p114  
**Product Reviews: Operating Accessories**  
Culvert loader, O, Lionel, Jul p108  
**Product Reviews: Rolling stock**  
Assorted rolling stock, O, Atlas O, Nov p122  
Extended-vision caboose, S, S-Helper Service, Sep p116  
Horizon cars, O, Amtrak, Atlas O, Dec p124  
**Product Reviews: Structures**  
Cornerstone building kits, O, Walthers, Oct p116  
Interlocking tower, O, Atlas O, Jul p116  
Tin Town structure, O, Marx, Jan p144  
**Product Reviews: Miscellany**  
Choochoocam video system, Nov p126  
Fire car, O, Lionel, Mar p112  
Handcar, Coca-Cola bears, O, K-Line, Mar p112  
Locomatic control system, O, Atlas O, Dec p124  
PowerGuard circuit protection device, QSI, May p120  
Railsounds boxcar, O, Lionel, Oct p118  
Starter set, Amtrak Genesis, O, MTH, Feb p110  
TPC3000 Track Power Controller, IC Controls, May p124  
Track cleaning car, O, Centerline Industries, Jan p46  
Transformer, The Max 600-watt, AC, Mainline Industries, Feb p118  
Transformer, Throttle Pack O-27, AC, Model Rectifier Corp., Sep p124  
Universal Command Control Upgrade Board, Train America, May p114

**Q**  
**Q and A**  
AC and DC motors on AC power, Oct p48  
AC and DC power sources for Flyer trains, Feb p54  
American Flyer prewar "XX" engine, Oct p48  
Build your own e-unit?, Feb p56  
Can motors for American Flyer engines, Oct p50  
Cleaning the inside of tubular track, Jul p48  
Collectible cards, Oct p50  
Faded numbers on steamers, Jul p50  
Identifying prewar and postwar no. 164 log loaders, Jan p50  
Infrared control, Mar p52  
Layout lighting, Feb p54  
Lionel e-unit buzz, Jan p50  
Lionel "K" transformers, Oct p48  
Locomotive pulling power, Dec p52  
Matching gummetal gray paint, Sep p50  
Metal trim on boxcar, May p52  
Multiple unit control of postwar Lionel engines, Feb p54  
No. 65 handcar motor replacement, Mar p48  
No. 112 Super O switch, May p50

No. 400 RDC cracks, Jul p46  
No. 671W tender chattering, Mar p50  
No. 1646 set catalog, Mar p52  
No. 3620 searchlight lens replacement, Jan p52  
Parts retailer list, Dec p52  
Pretailing paint of GGI, Sep p52  
Pennsylvania RR T1 search, May p54  
Prewar train metal fatigue, May p50  
Prewar Lionel tender whistles, Jan p52  
Relative scale of O gauge boxcars, Jul p46  
Running trains more slowly, Feb p56  
Simulating lumber tie-downs, Mar p52  
Storing trains, May p52  
To repair/upgrade and collectibility, Mar p48  
Toy train values, Jan p50  
Tubular track maintenance, Feb p52  
Using solvents, Jul p48  
Value of single tender, Sep p50  
Weak whistles, Sep p54  
Which wire to use, Mar p50  
Who was Kusan trains?, Jan p54  
Wiring nos. 145, 151, and 445 accessories, Jul p48  
Y2K compatibility with TrainMaster, Oct p48

**R**  
\*Recreating Lionel's scenic plots, Sep p96  
\*Repairing Lionel's helicopter and satellite-launching cars, Dec p110  
\*Repairing Lionel's milk car, May p90  
\*Repairing Lionel's no. 3361 Lumber Dump Car, Mar p95  
\*Repairing Lionel's operating boxcars, Oct p62  
\*Reviving a Lionel no. 270 bridge, Feb p77  
Rieken, Bill  
Piggys backs on parade, Mar p64  
\*Road of anthracite, The, Jul p70  
Robinson, Robbie  
Build a wooden arch bridge, Sep p92  
\*Royal restoration, Oct p82  
Rózsa, Sándor  
Russian dressing, Nov p100  
\*Russian dressing, Nov p100

**S**  
\*Saluting the Scouts, Nov p70  
Sanke, Robert F.  
Big Inch, The, May p154  
\*Santa Fe all the way, Dec p104  
Schafer, Dale  
Prized display, A, Feb p96

**Sets**  
American Flyer O gauge City of Denver, Mar p62  
Elusive, exclusive White's sets, The, Feb p72  
Get some trains rolling with a starter set, Dec p88  
Ives' Candidate Special, Feb p68  
Lionel's O-27 Frontier Gift Pack, Oct p92  
North to Alaska on three rails, Dec p170  
Russian dressing, Nov p100  
Streamliners for Junior, Jan p68  
\*Spirit of Christmas past, The, Dec p98  
\*Standard gauge on a shoestring, Oct p94  
\*Standard of the hobby, Oct p70  
\*Steam showdown, Mar p54  
\*Still in training after all these years, Dec p80  
\*Streamliners for Junior, Jan p68  
Swanson, Carl  
Batting Geeps!, Nov p92  
Easy steps to a realistic railroad, May p78  
For the love of Marx, Mar p84  
Hell Gate bridge, Sep p71  
Lionel's Ideal Layout, Jul p54  
Reviving a Lionel no. 270 bridge, Feb p77  
Santa Fe all the way, Dec p104  
Take a ride on the Reading, Oct p86  
UP means Unlimited Power, Jul p98  
Workin' on the railroad, Dec p86

**T**  
\*Take a ride on the Reading, Oct p86  
\*Tale of two trainmen, A, Jul p64  
Tashjian, Richard  
Hobby of history, A, May p58  
Thompson, Terry  
Amazing survivor, Jan p112  
Apartment layout, Sep p72  
Auction ABCs, May p100  
Baltimore & Ohio, The, Mar p90  
Building your own display-style layout, Feb p102  
GM switcher, The, Feb p71  
Having a blast, Nov p108  
Lionel's other B&O F3, Mar p114  
Lionel's SD40, Jul p146  
Lionel's Virginian Rectifier, Feb p122

Little workhouse, The, Sep p154  
North to Alaska on three rails, Dec p170  
Pennsy's K4, The, Jan p107  
Picking your power pack, Jan p60  
Standard of the hobby, Oct p70  
Steam showdown, Mar p54  
Trains and cars, Oct p46  
\*Time back when, A, Jan p76  
\*Timplat Central Lines, The, Nov p87  
**Tinplate prototypes**  
GM switcher, The, Feb p71  
Hell Gate bridge, Sep p71  
Pennsy's K4, The, Jan p107  
Tobias, Mark  
Streamliners for Junior, Jan p68  
Tóth, Endre  
Russian dressing, Nov p100  
**Track plans**  
Amazing survivor (O, Lionel), Jan p112  
Apartment layout (O, Lionel), Sep p72  
Big as life (S, American Flyer), Feb p78  
Building the MTH showroom layout (O, standard, MTH), Mar p70  
Building your own display-style layout (O, Lionel), Feb p102  
Father, a son and their trains, A (O, multiple), Oct p96  
Grand Trunk Western, The (O, multiple), May p88  
Happy medium (O, Lionel), Feb p82  
Like father, like daughter (O, multiple), Nov p102  
Lionel's Ideal Layout (O, Lionel), Jul p54  
Little world of fun (O, multiple), Feb p86  
MTH on the road (O, MTH), Oct p56  
Planning your holiday layout (O, multiple), Dec p64  
Road of anthracite, The (O, multiple), Jul p70  
Spirit of Christmas past, The (O, multiple), Dec p98  
Time back when, A (O, Lionel), Jan p76  
Timplat Central Lines, The (O, Lionel), Nov p87  
Whisper while you work (O, Lionel), Sep p84  
Wrong Island Railroad, The (O, multiple), Nov p78  
Trzoniec, Stanley W.  
Behind the counter, May p22  
\*Turn your Lionel K4 into a true Pacific, Jan p109

**U**  
\*UP means Unlimited Power, Jul p98  
Usher, Matthew  
Lionel in the making, Oct p80

**V**  
Vande Visse, Lee  
Got a light?, Jul p84

**W**  
\*Watson crossing, The, Sep p82  
Watson, David  
Long on variety, Sep p74  
\*Welcome to Klumpfont!, Nov p62  
\*When the lights went out at Lionel, May p76  
\*Whisper while you work, Sep p84  
Willard, Craig  
Little world of fun, Feb p86  
\*Workin' on the railroad, Dec p86  
\*Wrong Island Railroad, The, Nov p78

**X-Y-Z**  
Zirul, Arthur  
Laughter at Lionel, Mar p32  
Zummo, Rene  
Berkshire is reborn, A, Jan p44