



January



February



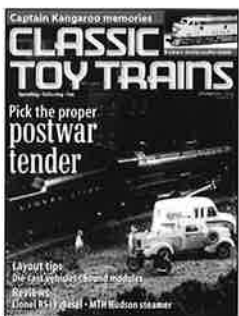
March



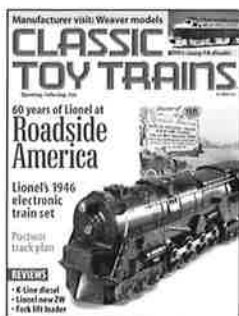
May



July



September



October



November



December

**BACK ISSUES:** The following issues are still available for \$4.95 per copy. Fall 1988; Summer 1989; February, April, June, August, October, and December 1990; April, June, August, and October 1991; August, October, and December 1992; January, March, May, July, and September 1993; January, March, May, July, September, and November 1994; January, May, July, September, November, and December 1995; January, February, May, July, September, and December 1996; February, March, May, July, September, November, and December 1997; and January, February, March, May, July, September, November, and December 1998. All issues from 1999 to 2001 (published in January,

February, March, May, July, September, October, November, and December) are also available for \$4.95 per copy.

Send all orders to Kalmbach Publishing Co., Dept. CK094, 21027 Crossroads Circle, P. O. Box 986, Waukesha, WI 53187-0986, call toll-free 800-533-6644 (outside the United States and Canada, call 262-796-8776), or visit CTT's web site at [www.classtrain.com](http://www.classtrain.com). Orders must include payment for postage and handling and any applicable state sales tax. Canadian orders add 7 percent GST to total. Payable in U. S. funds. Prices and availability are subject to change.

# CLASSIC TOY TRAINS®

## INDEX

Volume 14  
2001

©2002 Kalmbach Publishing Co., 21027 Crossroads Circle, Waukesha, WI 53187. No part of this volume may be reprinted without the specific permission of the publisher.

**USING THE INDEX:** Most feature material has been indexed three or more times: by the title under which it was published; under the author's last name; and by subject, usually falling under one or more of the CTT subject categories.

An asterisk (\*) preceding an entry indicates a feature by its published contents page title.

### CTT subject categories:

Accessories	Electrical and control
Cars	Historical
Classic trackplans	Interviews
Collectors/operators	Layout descriptions
Concept and commentary	Locomotives
Construction and maintenance	Manufacturer
Cover photos	Sets
Display	Track plans

### CTT departments:

Classic train sets  
Collectible Classics  
Editorials  
News and Notes  
Point of View  
Product News  
Product reviews  
Questions & Answers  
Talkin' Toy Trains

## A

### Accessories

Barrel loader and car repair, Dec p72  
Flyer's big city terminal, Nov p97  
Kitbashed Lionel buildings, Oct p75  
Make a deluxe MTH signal, Jul p95  
Primer on lighting your layout, A, Feb p88  
Repair Lionel's diesel fueling stations, Oct p86  
Repairing Lionel's no. 497 coaling tower, Sep p88  
Sounds for your layout, Sep p84  
Toys plus trains, Nov p86  
\*Adding an MTH backup light, Jan p80  
Algozzini, Joe  
Beware of fakes and frauds, Jul p28  
Allen, Steve  
Respect for a forgotten era, Sep p29  
\*American Flyer fantasy, Feb p67  
Anderson, Gary  
Exploring Marx patents, Dec p103  
Armstrong, Stuart  
Prewar X cars, Jul p85

## B

\*Barrel loader and car repair, Dec p72  
Bell, Mike  
Lionel 9090 Mini-Max railcar, Oct p 138  
\*Berber carpet roadbed, Jan p100  
Besouglouff, Neil  
Can you say "ubiquitous"? Sep p130  
Custom-painted engines in 5 steps, Dec p94  
Forced perspective, Sep p77  
Ten tips for die-cast vehicles, Sep p54  
\*Big trains - small room, Jul p54  
Boersma, Russ  
Make a deluxe MTH signal, Jul p95  
Brown, Bruce  
Children's Chanukah train, Jan p77  
\*Build a compact & changeable layout, May p50  
\*Build a mountain and tunnel, Jul p86  
\*Build Lionel's disappearing layout, Nov p91  
Butler, Robert S.  
Karl Bub California car, Jan p117

## C

\*Captain Kangaroo and trains, Sep p58  
Carlson, Roger  
Build a compact and changeable layout, May p50  
Build a mountain and tunnel, Jul p86  
Carp, Roger  
Build Lionel's disappearing layout, Nov p91  
Captain Kangaroo and trains, Sep p58  
Collection with the right chemistry, May p74  
Display your postwar accessories, Feb p82  
Flyer history everywhere you look, Feb p82  
Flyer S gauge Comet and Rocket PAs, May p138  
Lifetime of memories, A, Mar p56  
Lionel's no. 3424 brakeman car, Jul p138  
Lionel's no. 3562 barrel car, Mar p138  
Lionel Standard gauge no. 438 signal tower, Dec p154  
Lost in a collector's paradise, Mar p82  
Mr. Danksy goes to Washington, Jan p86  
MTH RailKing Pennsy K4s Pacific, Jan p170  
Not such a big failure after all, Mar p28  
Pristine Lionel store display, Jan p75  
Roadside America today, Nov p70  
Real postwar track plan, A, Oct p91  
See Roadside America, Part 1, Oct p50  
Sistine Chapel of trains, A, Oct p80  
Tool time at Lionel, Jul p76  
Visit the Super O Apple Junction layout, Nov p56  
Carporelli, Len  
Lionel's EP-5 'Jet' electrics, Nov p65  
**Cars**  
Barrel loader and car repair, Dec p72  
Flyer's Christmas car, Dec p99  
Ives Mojave mystery car, Feb p93  
Karl Bub California car, Jan p117  
New boxcar, old idea, Sep p71  
Postwar flatcar loads, Jul p60  
Repair Lionel's gang car, Feb p74  
Repair Lionel's ore dump cars, Jan p98  
Prewar X cars, Jul p85  
Ten best Lionel boxcars, Mar p62  
\*Children's Chanukah train, Jan p77  
**Classic trackplans**  
Multi-train 4 by 8 layout, Jan p108  
Thrill around the room track plan, May p90  
Two-sheet layout, Dec p82  
**Classic train sets**  
Lionel's 411E State set, Jul p64  
\*Clear acrylic layout, A, May p82

### Collectible Classics

Flyer S gauge Comet and Rocket PAs, May p138  
Lionel 9090 Mini-Max railcar, Oct p 138  
Lionel's no. 2056 Hudson  
Lionel's no. 2341 Jersey Central Train Master, Feb p146  
Lionel's no. 3424 brakeman car, Jul p138  
Lionel's no. 3562 barrel car, Mar p138  
Lionel Standard gauge no. 438 signal tower, Dec p154  
Marx's no. 413A Switchman Tower, Sep p130  
MTH RailKing Pennsy K4s Pacific, Jan p170  
\*Collection with the right chemistry, May p74  
**Collectors/operators**  
Bretch, Bob, Feb p82  
Carlson, Roger, May p50  
Cox, Allison and John, Mar p82  
Dansky, David, Jan p86  
Edwards, Mark, Dec p76  
Ferguson, Dale, Nov p56  
Franzen, Gerald, Sep p46  
Gavasci, Albert Jr. and Sr., Oct p80  
Geyra, David, Feb p70  
Gieringer, Laurence and Dora, Oct p50  
Gomez, Doug, Mar p66  
Gunter, Mike, Jan p68  
Johnson, Kent, Jul p54  
Malcolm, Bob, Feb p62  
Medsker, Tom, May p66  
Nigro, Benjamin, Feb p57  
Patterson, Gary, Jan p104  
Roberts, Adair, Dec p84  
Scheil, Steve, Mar p56  
Simon, David, Oct p66  
Simon, Jan, May p82  
Souhrada, John, Sep p62  
Spiro, Don, Dec p62  
Thompson, Terry, Feb p50  
Thurber, Forrest, Feb p67  
Troski, Stan, Jul p90  
Weber, Charlie, May p74  
Woodford, Robert, Jul p72  
\*Colorful cast of prewar trains, Sep p 46

### Concept and commentary

Children's Chanukah train, Jan p77  
Custom-painted engines in 5 steps, Dec p94  
Economics of toy trains, The, Nov p78  
Forced perspective, Sep p77  
Join the train club, Jan p110  
Hi-rail scenes made simple, Jan p82  
Model Builder magazine Christmas, Jan p94  
Ten layout mistakes, May p56  
Ten tips for die-cast vehicles, Sep p54  
Ten tools for your workbench, Jul p70  
Toys plus trains, Nov p86  
Two-sheet layout, Dec p82  
What's your train worth?, Dec p56  
Connor, Michael  
James Gang set isn't a villain, Mar p60  
**Construction and maintenance**  
Adding an MTH backup light, Jan p80  
Barrel loader and car repair, Dec p72  
Berber carpet roadbed, Jan p100  
Build a mountain and tunnel, Jul p86  
Build Lionel's disappearing layout, Nov p91  
Eight-step train restorations, Mar p50  
Hi-rail scenes made simple, Jan p82  
Kitbashed Lionel buildings, Oct p75  
Lionel track on your layout, Mar p76  
Make junk cars, Oct p89  
Repair a steamer drawbar guide, May p87  
Repair Lionel's diesel fueling stations, Oct p86  
Repair Lionel's ore dump cars, Jan p98  
Repair Lionel's gang car, Feb p74  
Repairing Lionel's no. 497 coaling tower, Sep p88  
Replacing those damage-prone collector shoes, Jan p99  
Ten layout mistakes, May p56  
Ten tools for your workbench, Jul p70  
Conway, Neal J., Jr.  
Dorfan's fortunes crumbled, May p60

### Cover photos

Big trains, small room, Jul  
Eight steps to restore old trains, Mar  
Five must-see layouts, Feb  
Lionel's collectible "Jet" engines, Nov  
Pick the proper postwar tender, Sep  
60 years of Lionel at Roadside America, Oct  
Tips and tricks for a scenic layout, May  
What's your old train worth?, Dec  
Who was first - Lionel or Flyer?, Jan  
\*Custom-painted engines in 5 steps, Dec p94

## D

Deger, Joe  
Flyer's big city terminal, Nov p97  
Flyer's Christmas car, Dec p99

Flyer's track-car finale, Mar p93  
Deming, Ken  
Berber carpet roadbed, Jan p100  
\*Destined to be a layout, Sep p62  
DiLapi, Anthony  
Multi-train 4 by 8 layout, Jan p108  
Two-sheet layout, Dec p82

### Display

Build Lionel's disappearing layout, Nov p91  
Display your postwar accessories, Feb p80  
Pristine Lionel store display, Jan p75  
Roadside America today, Nov p70  
See Roadside America, Part 1, Oct p50  
\*Display your postwar accessories, Feb p80  
\*Do it with diodes, Nov p82  
\*Dorfan's fortunes crumbled, May p60  
\*Dream never dies, The, Dec p28

## E

\*Economics of toy trains, The, Nov p78

### Editorials

Dream layouts, Jan p6  
Forward to the past, Mar p6  
Fuzzy English, Sep p6  
Greatest Hobby, The, Oct p6  
Proud tradition ends, A, May p6  
Ride is getting bumpy, The, Dec p6  
Still riding tinplate rails, Jul p6  
Take a train to work, Nov p6  
Where is S gauge heading? Feb p6  
Edwards, Mark A.  
Eleven pieces of Christmas, Dec p76  
Eichenberg, Dennis  
Do it with diodes, Nov p82  
Primer on lighting your layout, A, Feb p88  
\*Eight-step train restorations, Mar p50  
**Electrical and control**  
Display your postwar accessories, Feb p80  
Do it with diodes, Nov p82  
Make a deluxe MTH signal, Jul p95  
Primer on lighting your layout, A, Feb p88  
Sounds for your layout, Sep p84  
\*Eleven pieces of Christmas, Dec p76  
\*Exploring Marx patents, Dec p103

## F

\*Flyer history everywhere you look, Feb p82  
\*Flyer's big city terminal, Nov p97  
\*Flyer's Christmas car, Dec p99  
\*Flyer's track-car finale, Mar p93  
Foltz, Bob  
Tip-top Large scale layout, Jul p72  
\*Forced perspective, Sep p77  
\*Full house collection, Dec p84  
Funchess, Ed  
Just what size is O gauge?, Oct p26

## G

Geyra, David  
Lionel reaches the Promised Land, Feb p70  
Gibbs, Terry  
Market's getting better, The, Nov p32  
Gibson, James  
Insights from Amtrak, May p28  
\*Golden anniversary Flyer train, Jul p66  
Gomez, Doug  
Layout with room to spare, A, Mar p66  
Grabski, Don  
Adding an MTH backup light, Jan p80  
Grams, John A.  
Eight-step train restorations, Mar p50  
Ives Mojave mystery car, Feb p93  
Lionel prewar uncataloged sets, Nov p99  
Lionel's 411E State set, Jul p64  
Lionel's Electronic Set, Oct p56  
Model Builder magazine Christmas, Jan p94  
Proper postwar tenders, Sep p78  
Who was first Lionel or Flyer?, Jan p60  
Grams, John A., and Thompson, Terry  
What's your train worth?, Dec p56

## H

Hall, George  
Clear acrylic layout, A, May p82  
Full house collection, Dec p84  
Hamler, Ted  
Golden anniversary Flyer train, Jul p66  
\*Hi-rail scenes made simple, Jan p82  
Hilbert, Mike  
Those other Hudsons, Sep p72  
Repair a steamer drawbar guide, May p87

### Historical

Captain Kangaroo and trains, Sep p58  
Dorfan's fortunes crumbled, May p60  
Exploring Marx patents, Dec p103  
Let's call the whole thing off, Feb p97  
Model Builder magazine Christmas, Jan p94  
Pristine Lionel store display, Jan p75  
Rails & Sails cards, Dec p70  
Roadside America today, Nov p70

See Roadside America, Part 1, Oct p50  
Tool time at Lionel, Jul p76  
Who was first: Lionel or Flyer?, Jan p60  
Hoffer, George  
Economics of toy trains, The, Nov p78  
Hollander, Ron  
Let's call the whole thing off, Feb p97

## I-J-K

\*In one era, out the other, Sep p92  
**Interviews**  
Manufacturer visit: Weaver Models, Oct p62  
\*Ives Mojave mystery car, Feb p93  
\*James Gang set isn't a villain, Mar p60  
Johnson, Carl and Kent  
In one era, out the other, Sep p92  
Loco motion, Oct p96  
Solderless layout, Dec p107  
Solid foundation, A, Nov p102  
Johnson, Kent  
Big trains - small room, Jul p54  
\*Join the train club, Jan p110  
\*Just what size is O gauge?, Oct p26  
\*Karl Bub California car, Jan p117  
Keller, Bob  
Manufacturer visit: Weaver Models, Oct p62  
\*Kitbashed Lionel buildings, Oct p75  
Klaassen, Terraal  
Ten best Lionel boxcars, Mar p62

## L

**Layout descriptions (By owner, when applicable, or layout name. T indicates track plan included, followed by gauge or scale designation, then manufacturer.)**  
Carlson, Roger (S, American Flyer), May p50  
Dansky, David (T, O, OO, Standard, & 2", multiple), Jan p86  
Edwards, Mark (T, S, multiple), Dec p76  
Ferguson, Dale (T, O, multiple), Nov p56  
Franzen, Gerald (O & Standard, multiple), Sep p46  
Geyra, David (T, O, multiple), Feb p70  
Gieringer, Laurence and Dora (O, Lionel), Oct p50, Nov p70  
Gomez, Doug (T, O & S, multiple), Mar p66  
Gunter, Mike (T, O, Lionel), Jan p68  
Johnson, Kent (T, O, multiple), Jul p54  
Malcolm, Bob (T, O, Lionel), Feb p62  
Medsker, Tom (T, O, multiple), May p66  
Nigro, Benjamin (T, O, multiple), Feb p57  
Patterson, Gary (T, O, multiple), Jan p104  
Scheil, Steve (O, Lionel), Mar p56  
Simon, David (O, Lionel), Oct p66  
Simon, Jan (O, multiple), May p82  
Souhrada, John (T, O, multiple), Sep p62  
Spiro, Don (T, O, Lionel), Dec p62  
Thompson, Terry (T, O, Lionel), Feb p50  
Thurber, Forrest (T, S, American Flyer), Feb p67  
Woodford, Robert (G, multiple), Jul p72  
\*Layout with room to spare, A, Mar p66  
\*Learned layout, A, Dec p62  
Lechner, Joseph H.  
New boxcar, old idea, Sep p71  
\*Let's call the whole thing off, Feb p97  
\*Lifetime of memories, A, Mar p56  
\*Lionel prewar uncataloged sets, Nov p99  
\*Lionel reaches the Promised Land, Feb p70  
\*Lionel 9090 Mini-Max railcar, Oct p 138  
\*Lionel Standard gauge no. 438 signal tower, Dec p154  
\*Lionel track on your layout, Mar p76  
\*Lionel's 411E State set, Jul p64  
\*Lionel's Electronic Set, Oct p56  
\*Lionel's EP-5 'Jet' electrics, Nov p65  
\*Loco motion, Oct p96  
**Locomotives, toy train**  
Adding an MTH backup light, Jan p80  
Lionel's EP-5 'Jet' electrics, Nov p65  
Proper postwar tenders, Sep p78  
Repair a steamer drawbar guide, May p87  
Those other Hudsons, Sep p72  
\*Lost in a collector's paradise, Mar p82

**M**  
Madden, Jeff  
Kitbashed Lionel buildings, Oct p75  
\*Make a deluxe MTH signal, Jul p95  
\*Make junk cars, Oct p89  
\*Making the right connection, Sep p79  
Malcolm, Bob  
Super O way to go, A, Feb p62  
**Manufacturer: American Flyer/Gilbert**  
American Flyer fantasy, Feb p67  
Build a compact and changeable layout, May p50  
Colorful cast of prewar trains, Sep p46  
Economics of toy trains, The, Nov p78  
Flyer history everywhere you look, Feb p82

Flyer's big city terminal, Nov p97  
Flyer's Christmas car, Dec p99  
Flyer's track-car finale, Mar p93  
Full house collection, Dec p84  
Golden anniversary Flyer train, Jul p66  
Mr. Danksy goes to Washington, Jan p86  
Those other Hudsons, Sep p72  
What's your train worth?, Dec p56  
Who was first: Lionel or Flyer?, Jan p60  
**Manufacturer: American Model Toys/Kusam**  
Visit the Super O Apple Junction layout,  
Nov p56  
**Manufacturer: American Models**  
American Flyer fantasy, Feb p67  
Eleven pieces of Christmas, Dec p76  
**Manufacturer: Bachmann**  
Tip-top Large scale layout, Jul p72  
**Manufacturer: Beggs**  
Collection with the right chemistry, May p74  
**Manufacturer: Bing**  
Colorful cast of prewar trains, Sep p46  
**Manufacturer: Dorfan**  
Colorful cast of prewar trains, Sep p46  
Dorfan's fortunes crumbled, May p60  
**Manufacturer: Girard**  
Colorful cast of prewar trains, Sep p46  
**Manufacturer: Hafner**  
Colorful cast of prewar trains, Sep p46  
**Manufacturer: Howard**  
Collection with the right chemistry, May p74  
**Manufacturer: Ives**  
Colorful cast of prewar trains, Sep p46  
Ives Mojave mystery car, Feb p93  
Lost in a collector's paradise, Mar p82  
Mr. Danksy goes to Washington, Jan p86  
**Manufacturer: K-Line**  
Join the train club, Jan p110  
Lionel track on your layout, Mar p76  
**Manufacturer: Karl Bub**  
Karl Bub California car, Jan p117  
**Manufacturer: Lehmann/LGB**  
Sistine Chapel of trains, A, Oct p80  
Tip-top Large scale layout, Jul p72  
**Manufacturer: Lionel Corp.**  
Barrel loader and car repair, Dec p72  
Build Lionel's disappearing layout, Nov p91  
Captain Kangaroo and trains, Sep p58  
Collection with the right chemistry, May p74  
Colorful cast of prewar trains, Sep p46  
Display your postwar accessories, Feb p80  
Do it with diodes, Nov p82  
Economics of toy trains, The, Nov p78  
Full house collection, Dec p84  
Learned layout, A, Dec p62  
Lifetime of memories, A, Mar p56  
Lionel prewar uncataloged sets, Nov p99  
Lionel track on your layout, Mar p76  
Lionel's 41E State set, Jul p64  
Lionel's Electronic Set, Oct p56  
Lionel's EP-5 'Jet' electrics, Nov p65  
Lost in a collector's paradise, Mar p82  
Make a deluxe MTH signal, Jul p95  
Model Builder magazine Christmas, Jan p94  
Mr. Danksy goes to Washington, Jan p86  
Multi-train 4 by 8 layout, Jan p108  
New boxcar, old idea, Sep p71  
Postwar flatcar loads, Jul p60  
Prewar X cars, Jul p85  
Pristine Lionel store display, Jan p75  
Proper postwar tenders, Sep p78  
Repair Lionel's diesel fueling stations, Oct p86  
Repair Lionel's ore dump cars, Jan p98  
Repair Lionel's gang car, Feb p74  
Repairing Lionel's no. 497 coaling tower,  
Sep p88  
See Roadside America, Part 1, Oct p50  
Sistine Chapel of trains, A, Oct p80  
Streamliner inspired layout, Oct p66  
Super O way to go, A, Feb p62  
Ten best Lionel boxcars, Mar p62  
Three-rail dreams, Feb p50  
Tips and tricks layout, May p66  
Tool time at Lionel, Jul p76  
Visit the Super O Apple Junction layout,  
Nov p56  
What's your train worth?, Dec p56  
Who was first: Lionel or Flyer?, Jan p60  
**Manufacturer: Lionel MPC, LTI & LLC**  
Big trains - small room, Jul p54  
Destined to be a layout, Sep p62  
Do it with diodes, Nov p82  
Economics of toy trains, The, Nov p78  
James Gang set isn't a villain, Mar p60  
Join the train club, Jan p110  
Kitbashed Lionel buildings, Oct p75  
Layout with room to spare, A, Mar p66  
Lionel reaches the Promised Land, Feb p70  
Lionel track on your layout, Mar p76  
Me, my shelf, and O, Feb p57  
Milwaukee memories layout, Jan p68

Streamliner inspired layout, Oct p66  
**Manufacturer: Marx**  
Exploring Marx patents, Dec p103  
Join the train club, Jan p110  
Marx's plastic era, Jul p90  
What's your train worth?, Dec p56  
**Manufacturer: MTH**  
Adding an MTH backup light, Jan p80  
Big trains - small room, Jul p54  
Children's Chanukah train, Jan p77  
Clear acrylic layout, A, May p82  
Destined to be a layout, Sep p62  
Join the train club, Jan p110  
Lionel reaches the Promised Land, Feb p70  
Make a deluxe MTH signal, Jul p95  
Me, my shelf, and O, Feb p57  
Tips and tricks layout, May p66  
Transcontinental hi-rail layout, Jan p104  
**Manufacturer: S-Helper Service**  
Eleven pieces of Christmas, Dec p76  
**Manufacturer: Weaver**  
Big trains - small room, Jul p54  
Lionel reaches the Promised Land, Feb p70  
Manufacturer visit: Weaver Models, Oct p62  
Me, my shelf, and O, Feb p57  
Transcontinental hi-rail layout, Jan p104  
Visit the Super O Apple Junction layout,  
Nov p56  
**Manufacturer: Williams**  
Learned layout, A, Dec p62  
Me, my shelf, and O, Feb p57  
**Manufacturer: Winner**  
Collection with the right chemistry, May p74  
\*Manufacturer visit: Weaver Models, Oct p62  
\*Market's getting better, The, Nov p32  
\*Marx's plastic era, Jul p90  
\*Me, my shelf, and O, Feb p57  
Medsker, Tom  
Tips and tricks layout, May p66  
\*Milwaukee memories layout, Jan p68  
\*Mr. Danksy goes to Washington, Jan p86  
\*Model Builder magazine Christmas, Jan p94  
Moore, Dennis  
Join the train club, Jan p110  
\*Multi-train 4 by 8 layout, Jan p108  
**N**  
\*Need shorter track? Cut it, Mar p80  
Nelson, Bob  
Need shorter track? Cut it, Mar p80  
\*New boxcar, old idea, Sep p71  
**News & Notes photos: Accessories**  
CIT Diyco van, O, Ink Well, Jul p23  
Columbia Oil storage tank, O, MTH, Jan p27  
Figures for O or S gauge layouts, Town &  
Country Hobbies, Dec p24  
Nuclear reactor, O, Lionel, Sep p23  
Repro Dorfan crane, Standard gauge,  
T-Replications, Oct p24  
**News & Notes photos: Events & people**  
Art Curran obituary, Feb p23  
Frank Pettit obituary, Mar p24  
Frank Vander Wiede's 1950s Christmas  
layout, Nov p23  
Guinness Express event, Mar p23  
K-Line's Bob Grubba and Ken Silvestri,  
May p25  
MTH owner Mike Wolf and GTT editor  
Neil Besougloff, Dec p22  
**News & Notes photos: Locomotives**  
Boston & Maine 2-8-0, O, Weaver, May p24  
EMD F40PH, Alco PA, and Alco RS-1 diesels,  
O, K-Line, Jul p23  
New York Central Hudson, S, American Flyer,  
Feb p22  
Milwaukee Road Hiawatha 4-4-2, O, Weaver  
Models, Oct p22  
Pennsylvania 2-10-4, O, Lionel, Sep p25  
Pennsylvania Torpedo, S, American Models,  
Sep p22  
Union Pacific Challenger, O, Lionel,  
Feb p21  
Union Pacific Challenger, Large scale,  
MTH, May p24  
**News & Notes photos: Miscellany**  
Audio-engineer by Electro-Nuclear Devices,  
Jul p23  
Bradley Woodworks Lionel clock, Oct p22  
Buddy "L" train sold at auction, Oct p24  
Dreyfuss Hudson print by Robert L. Hunt,  
Sep p23  
Hallmark's Chessie Steam Special ornament,  
Nov p23  
Lionel contest poster, Jan p26  
Lionel factory, May p23  
Lionel license plates (Illinois), Mar p24  
Lionel website adds dealer locator, Feb p23  
Prototype Alco C-630 in 1971 Christmas colors,  
Nov p22  
Original Lionel artwork auctioned, Jul p25

Original Lionel artwork auctioned, Feb p22  
**News & Notes photos: Painting & kitbashing**  
Doug Cederberg's repainted Soo Line Geep,  
Nov p22  
Ed Price's repainted Heavyweights, Dec p24  
Ken Campbell's Christmas 1950 and 2000,  
Jan p25  
Larry Kostka's Trad Jazz express, Mar p23  
Mark Yardley's kitbashed armored gondola,  
Jul p24  
R. T. Owen's repainted Colorado Midland  
combine, Sep p22  
**News & Notes photos: Rolling stock**  
BC Rail cabooses, O, K-Line custom run,  
Oct p24  
Kahn's and Old Dutch custom refrigerator  
cars, S, S-Helper Service, Dec p24  
S Gaugian Magazine custom boxcar, S,  
S-Helper Service, Jan p26  
TTX Articulated Auto carrier, O, Atlas O,  
Sep p24  
White Rock refrigerator car, O, K-Line,  
Sep p24  
**News & Notes: World's Greatest Hobby**  
Northeastern Wisconsin O Gaugers train  
show, Dec p24  
Toy trains in the hospital, Dec p23  
Negro, Benjamin  
Me, my shelf, and O, Feb p57

## O-P

Plummer, Ray  
Barrel loader and car repair, Dec p72  
Repair Lionel's diesel fueling stations,  
Oct p86  
Repair Lionel's gang car, Feb p74  
Repair Lionel's ore dump cars, Jan p98  
Repairing Lionel's no. 497 coaling tower,  
Sep p88  
Replacing those damage-prone collector  
shoes, Jan p99  
**Point of View**  
Beware of fakes and frauds, Jul p28  
Dream never dies, The, Dec p28  
Insights from Amtrak, May p28  
Just what size is O gauge?, Oct p26  
Let's all slow down, Feb p26  
Market's getting better, The, Nov p32  
Not such a big failure after all, Mar p28  
What makes a train collectible?, Jan p32  
\*Postwar flatcar loads, Jul p60  
\*Prewar X cars, Jul p85  
\*Primer on lighting your layout, A, Feb p88  
\*Pristine Lionel store display, Jan p75  
**Product News photos:**  
**Accessories and layout supplies**  
Alien freight car/spaceship set, O, Y.O.R.K.  
Trains, Feb p31  
Blinking Ford billboard, O, Town & Country  
Hobbies, Dec p31  
Blinking grade crossing signals, O, Shiloh  
Signals, Feb p34  
Blinking Pepsi billboards, O/S, Town &  
Country Hobbies, Feb p30  
Blinking railroad billboards, O/S, Town &  
Country Hobbies, May p30  
Building kit, O, Downtown Deco, Jul p38  
Burning house accessory, O, Willard  
Animations, Jul p34  
Chain-link fence kit, O, Brennan's, Jan p44  
Coal loader, O/S, MTH, Oct p32  
Curved O-72/O-54 switch, O, Atlas O,  
Feb p34  
Die-cast metal auto assortment, O, Ink Well,  
Oct p36  
Die-cast metal Christmas tree truck, O,  
Die-Cast Direct, Jan p42  
Die-cast metal Ford auto set, O, Ink Well,  
Dec p31  
Die-cast metal Good Humor truck, O,  
Ink Well, Jan p44  
Die-cast metal Penn Central pickup truck,  
Ink Well, Jul p31  
Die-cast metal Studebaker truck, O, Brasilia  
Press, Jul p31  
Holiday trees, fences, and lights, O, Laster  
Hobbies, Jan p42  
Military vehicles, O/S, Dimestore Dreams,  
Jan p38  
No. 264 Operating Forklift, O, Lionel,  
May p34  
No. 456 Coal Ramp, O, Lionel, Jul p36  
S gauge flex track, American S Gauge,  
Oct p40  
Sidewalk double-sided signs, O/S, Town &  
Country Hobbies, Oct p38  
Signal kits, O, Scaled World, Oct p36  
Track power controller, IC Controls,  
Nov p42  
Traditional McDonalds, O, MTH, Sep p30

Video Cam Train outfit, O, Video Cam Train,  
Oct p38  
Wooden billboard kit, O/S, Midwest Products,  
Oct p40  
**Product News photos:**  
**Locomotives, diesel/motorized**  
Atlantic Coast-Line EMD E7, O, Williams,  
May p30  
Delaware & Hudson Alco C-420, O, Lionel,  
Oct p32  
New York Central Alco RS-11, O, Lionel,  
Jul p31  
Rock Island Alco RS-3, O, MTH, Sep p34  
Southern F3, S, S-Helper Service, Nov p35  
Southern Pacific F-M Train Master, O,  
MTH, Mar p30  
Trolley car, O, Western Hobbycraft, Jul p34  
Union Pacific EMD E8s, O, K-Line, Jul p30  
**Product News photos:**  
**Locomotives, steam**  
British Rail 2-6-0 live steamer, O, Corgi,  
Feb p31  
Erie 0-8-8-0, O, 3rd Rail, Nov p34  
Great Northern 2-8-8-2, O, MTH, Dec p30  
New York Central Dreyfuss Hudson, O,  
MTH, May p36  
Southern Pacific 2-8-2, O, 3rd Rail, May p30  
Pennsylvania C1-class 0-8-0, O, Weaver,  
May p34  
Pennsylvania S2 turbine, O, Williams, Nov p40  
Union Pacific 2-8-4, O, Williams, Nov p34  
**Product News photos:**  
**Miscellany**  
Buyer's Guide to Toy Train Locomotives,  
Sep p38  
Coffee mugs, Union Pacific, Milwaukee  
Road, and Rock Island, May p34  
Cutting and bending jigs, O, Van's Trains,  
Jul p36  
CIT shirts, Stitches With Design, Jul p31  
Decorated mirror, Anne Hoover Enterprises,  
Nov p40  
Display Case, Full View Display Co., Oct p33  
Dr. Tinker's The Coupler, Feb p31  
Foam locomotive work cradle, O, Dr. Tinker,  
Jan p38  
Gilbert American Flyer HO 1938-1963,  
Gary Klein, Jul p38  
Greenberg's Guide to Lionel Trains  
1945-1969 Centennial Edition, Jan p39  
Lighting kit with adjusted intensity, Dallee  
Electronics, Mar p36  
Lionel: America's Favorite Toy Trains,  
Jan p46  
Lionel Hawaiian shirts, O, Reyn Spooner  
Shirts, Sep p31  
Rail Stop end-of-track caps, O, Glenn Snyder,  
Nov p34  
Sound Station 312, Model Rectifier Corp.,  
Jan p42  
Trackless rail system, O, JAK Tool, Oct p32  
Train pattern fabric, Parker Co., Mar p31  
Video American Flyer 2, TM Books & Videos,  
Dec p31  
Video Lionel Legends 2: The Hudson,  
TM Books and Videos, Sep p36  
Video Mini Train Cams, Al Sawyer, Mar p31  
**Product News photos:**  
**Rolling stock, custom-decorated**  
Baltimore & Ohio and Wayne feeds cars, O,  
Weaver, Oct p38  
Baltimore & Ohio Timesaver boxcars, S,  
S-Helper Service, May p31  
Berghoff, Wilson's, and Zion refrigerator cars,  
S, S-Helper Service, Feb p30  
Chicago & Eastern Illinois Express boxcar,  
O, Weaver, Feb p36  
Chicago Great Western Express car, O,  
Weaver, Feb p36  
Conrail and New York Central hoppers, O,  
Weaver, Sep p30  
Cooperstown Brewing Co. refrigerator car,  
O, Weaver, Mar p31  
Dad's Dog Food hopper, O, MTH, Jan p39  
Freeburg Fire Co. refrigerator car, O,  
Weaver, Dec p31  
Freeburg Fire Co. tank car, O, Weaver,  
Mar p34  
Frisco Express Car, O, Weaver, Nov p40  
Harvilla's Soda/Reading boxcar, O, Weaver,  
Mar p30  
Hite Co. searchlight car, O, MTH, Nov p34  
Morning Press hopper car, O, Weaver,  
Mar p30  
New Haven Express car, O, Weaver, Sep p34  
Ontario Northland and Fike's Dairy cars, O,  
Weaver, Jul p30  
Pennsylvania and Beacon Feeds hopper cars,  
O, Weaver, Jan p38  
Reading hopper, O, Weaver, Sep p34

Southern flatcars w/container loads, O, Weaver, Nov p35  
Union Pacific die-cast metal hoppers, O, K-Line, May p36  
Western Maryland hopper, O, Weaver, Sep p36

#### Product News photos:

#### Rolling stock, freight

Amtrak searchlight car, O, MTH, Feb p36  
Assorted extended-vision cabooses, S, S-Helper Service, Dec p30  
Assorted freight cars, S, American Models, Feb p30  
Assorted freight cars, O, Marx, Oct p33  
Assorted freight cars, O, Marx, Nov p38  
Assorted refrigerator cars, Large scale, USA Trains, Dec p34  
BNSF, CSX, TTX well cars, Large scale, USA Trains, May p31  
Bangor & Aroostook and Yreka Western boxcars, O, Weaver, Oct p36  
Burlington Route unibody tank car, O, Lionel, Nov p42  
CSX operating dump car, O, MTH, Sep p31  
Evans Auto Loader car, O, Lionel, Sep p30  
Extruded aluminum tank cars, O, K-Line, Dec p36  
Flatcars with loads, S, S-Helper Service, Jul p31  
Great Northern boxcar, S, S-Helper Service, Mar p31

Lehigh Valley and Tivoli Beer refrigerator cars, S, S-Helper Service, Sep p31  
Lehigh Valley boxcar, Large scale, USA Trains, Jul p30  
Maersk and TTX freight cars, O, Lionel, Oct p33

Military train, O, Marx, Jan p38  
Millennium boxcars, O, MTH, May p38  
Milwaukee Road caboose, S, American Models, Jan p39  
New Haven and New York Central boxcars, Large scale, USA Trains, Sep p34

Northern Pacific and TH&B boxcars, S, S-Helper Service, Dec p34  
Operating welding flatcar, O, Lionel, Mar p31  
Pacific Fruit Express refrigerator car, S, S-Helper Service, Nov p38

Pennsylvania and Conrail porthole cabooses, O, K-Line, May p31  
Reading hopper car, O, Atlas O, Dec p30  
Union Pacific die-cast metal coil cars, O, K-Line, Jul p34

#### Product News photos:

#### Rolling stock, passenger

Union Pacific Budd car set, S, American Models, Nov p38

#### Product Reviews:

#### Accessories & miscellany

Coffee cup/E8 showdown, Mainline Mugs vs, K-Line, Sep p101  
Dorfan reproduction crane, Standard gauge, T-reproductions, Nov p120  
IC Controls action recorder, Jan p132  
Lionel ZW with 180 watt power supply, Oct p108  
Model Rectifier Corp. Sound Station 312, Jul p106  
Microsoft Train Simulator, Dec p124  
No. 264 forklift platform, O, Lionel, Oct p112  
No. 456 coal ramp, O, Lionel, Sep p106  
No. 463 nuclear reactor, O, Lionel, May p114  
No. 785 coal loader, O/S, MTH (RailKing), Nov p122

Remote control switches, Standard gauge, MTH (Tinplate Traditions), Jul p112  
Shanty structure kit, O, Atlas O, Oct p118  
Vehicle illumination service, Jack Pearce, Feb p114

Video camera system, Video Cam Train, Nov p116

#### Product Reviews:

#### Locomotives, diesel

Amtrak F40PH, O, K-Line, Sep p108  
Baltimore & Ohio Alco FA A-A set, O, MTH (RailKing), Mar p108  
Baltimore & Ohio Alco FA A-B-A set, O, MTH (Premier), Oct p114  
High/low nose EMD SD35s, O, Atlas O, Mar p110  
New York Central Alco RS-3, O, K-Line, Nov p110  
New York Central Alco RS-11, O, Lionel, Sep p100  
New York Central EMD E7, O, Williams, Jul p98  
Pennsylvania Alco PA1 A-A set, O, K-Line, Oct p105

Rock Island, Alco RS-3, O, MTH (RailKing), Nov p110  
Seaboard and Union Pacific EMD NW2, O, Williams, Jan p118  
Southern Pacific FM Train Master, O, MTH (Premier), May p102  
Union Pacific E8, O, K-Line, Sep p96  
Union Pacific M10000, O, MTH (RailKing), Dec p118

#### Product Reviews:

#### Locomotives, electric/motorized

Brill trolley car, O, Western Hobbycraft, Nov p114  
London Midland & Southern M/U set, O, Ace Trains, Jan p136  
Metroliners, O, Williams, Feb p106  
Metropolitan Transit trolley, O, Industrial Rail, May p112  
Milwaukee Road GE bipolar motor, O, MTH (Premier), O, Dec p110  
New Haven GE rectifier, O, MTH (Premier), Mar p102  
New Haven GE rectifier, O, MTH (RailKing), May p110  
Park Ave. trolley, O, Marx, May p106  
Pennsylvania GE GGI, O, MTH (RailKing), Feb p110  
Union Pacific DC3 track inspection car, O, MTH (Premier), Sep p112

#### Product Reviews:

#### Locomotives, steam

Baltimore & Ohio 4-4-2 Atlantic, O, Lionel, May p98  
Chesapeake & Ohio 4-6-4 Hudson, O, MTH (RailKing), Jan p130  
Harriman Union Pacific 2-8-0 Consolidation, O, Lionel, May p106  
Harriman Union Pacific/Southern Pacific 2-8-2 Mikados, O, 3rd Rail, Jul p102  
Milwaukee Road Hiawatha 4-4-2 Atlantic, O, Weaver, Nov p106  
New Haven R1-class 4-8-2 Mountain, O, Lionel, Oct p104  
New York Central Dreyfuss 4-6-4 Hudson, O, MTH (Premier), Sep p104  
Nickel Plate 2-8-4 Berkshire, O, Lionel, Dec p114  
Norfolk & Western Y6b-class 2-8-8-2, O, MTH (RailKing), Jul p103  
Pennsylvania 2-10-0 Decapod, O, MTH (RailKing), Nov p118  
Pennsylvania 4-6-2 Torpedo, S, American Models, Oct p100  
Pennsylvania C1-class 0-8-0, O, Weaver, Jul p108  
Pennsylvania E6-class 4-4-2 Atlantic, O, MTH (Premier), May p98  
Santa Fe 4-6-2 Pacific, O, K-Line, Jan p126  
Union Pacific 2-8-4 Berkshire, O, Williams, Dec p122  
Union Pacific 4-6-4 Challenger, O, Lionel, Mar p98  
West Side Lumber Co. Shay, O, Lionel, Feb p102

#### Product Reviews:

#### "Retro reviews"

"Dash 9, O, Williams, Oct p101  
Jersey Central Camelback 4-6-2, O, MTH (RailKing), Sep p97  
Lionel Geeps, O, Dec p111  
Phantom, O, Lionel, Jul p99  
SD50, O, Lionel, Nov p107

#### Product Reviews:

#### Rolling stock

Operating dump car, O, MTH, Nov p116  
Operating helicopter car, O, MTH, Jan p134

#### Product Reviews:

#### Train sets

Burlington steam starter set w/RailSounds, O, Lionel, Jan p122  
No. 2400 series car set, O, Williams, Mar p106  
Steam starter set w/LoCoSound, O, MTH (RailKing), Jan p114

\*Proper postwar tenders, Sep p78

#### Q and A

Adding a horn to a Lionel Alco, Nov p50  
Are Marx and MTH compatible with Lionel?, Jan p54  
Bakelite repair: yes or no?, Nov p48  
Cleaning locomotive boilers, Nov p46  
Filling holes on die-cast boilers, Oct p44  
Flex-I-Track question, Jan p52  
Flyer "All Aboard" scenic unit question, Feb p42  
Flyer EP5 smoother starts, Dec p44  
Flyer mildew removal, May p44  
Flyer O-31 curves, Sep p42  
Flyer smoke unit repair, Mar p46

Flyer track on Homasote, Nov p48  
GE Model 90 diesel availability, Jul p44  
Layout construction: Is a layout temperature sensitive?, Feb p42  
Layout construction: helix construction, May p42  
Layout construction: connecting wires, Sep p44  
Lionel bicycle follow-up, Jan p56  
Lionel clear styrene cars, Dec p46  
Lionel coupler height, Nov p46  
Lionel "Factory Selection" sets, Mar p44  
Lionel KW problems, Jul p44  
Lionel 031 switches, Feb p44  
Lionel no. 124 station brackets, Jan p58  
Lionel no. 128 newstand mechanism, Sep p40  
Lionel no. 613 NW2 motor, Jan p54  
Lionel no. 1502 Yard Chief set woes, Mar p42  
Lionel no. 1608 Amex General set value, Sep p42  
Lionel no. 2018 color question, Feb p45  
Lionel no. 2452X gondolas, Oct p42  
Lionel no. 2600 Madison car repairs, Oct p42  
Lionel no. 3472 door color, Jan p52  
Lionel no. 4200 reverse problem, May p42  
Lionel no. 6427 rarity?, Jan p54  
Lionel no. 8200 and Mighty Sound of Steam, Jul p42  
Lionel no. 18313 GGI horn addition, Nov p48  
Lionel prewar Vanderbilt restoration, Feb p44  
Lionel set identification, Oct p42  
Lionel set no. X802 overstamp, Feb p45  
Lionel steamers running slow, Jul p44  
Lionel Super O track, Sep p42  
Lionel TrainMaster glitches, Feb p44  
Lionel UP set repaint?, Jul p42  
Lionel ZW transformer's excessive heat, Jan p52  
Lionel ZW capability, May p44  
Long term train storage, Dec p46  
Marx no. 666 steam engine tenders, Mar p44  
Painting flaking light bulbs, Sep p42  
Painting undecorated locomotives, May p42  
Rectifier discs, Oct p44  
Restoring Texas Special lettering, Dec p44  
Smoke fluid, what is it? Jan p58  
Stripping Bakelite, Dec p44  
Uncataloged 1932 giveaway set, Nov p46  
Uncataloged set query, Jan p56  
Value of restored trains, Feb p42  
Williams F7 uncoupler, Sep p40

\*Streamliner inspired layout, Oct p66  
Stubber, Ray  
Thrice around the room track plan, May p90  
\*Super O way to go, A, Feb p62  
Swanson, Carl  
Milwaukee memories layout, Jan p68

**T**  
**Talkin' Toy Trains**  
In one era, out the other, Sep p92  
Loco motion, Oct p96  
Soldierless layout, Dec p107  
Solid foundation, A, Nov p102  
\*Ten best Lionel boxcars, Mar p62  
\*Ten layout mistakes, May p56  
\*Ten tips for die-cast vehicles, Sep p54  
\*Ten tools for your workbench, Jul p70  
Thompson, Terry  
Lionel's no. 2056 Hudson  
Lionel's no. 2341 Jersey Central Train Master, Feb p146  
Ten layout mistakes, May p56  
Ten tools for your workbench, Jul p70  
Three-rail dreams, Feb p50  
What makes a train collectible?, Jan p32  
Thompson, Terry and John Grams  
What's your train worth?, Dec p56  
\*Those other Hudsons, Sep p72  
\*Three-rail dreams, Feb p50  
\*Thrice around the room track plan, May p90  
Thurber, Forrest, with Mike Thurber  
American Flyer fantasy, Sep p76

**Tinplate prototypes**  
\*Tip-top Large scale layout, Jul p72  
\*Tips and tricks layout, May p66  
\*Tool time at Lionel, Jul p76  
\*Toys plus trains, Nov p86

**Track plans**  
American Flyer fantasy (S, American Flyer), Feb p67  
Big trains - small room (O, multiple), Jul p54  
Build Lionel's disappearing layout (O, Lionel), Nov p91  
Captain Kangaroo and trains (O, Lionel), Sep p58  
Destined to be a layout (O, multiple), Sep p62  
Eleven pieces of Christmas (S, multiple), Dec p76  
Layout with room to spare, A (O & S, multiple), Mar p66  
Learned layout, A (O, Lionel), Dec p62  
Lionel reaches the Promised Land (O, multiple), Feb p70  
Milwaukee memories layout (O, Lionel), Jan p68  
Me, my shelf, and O (O, multiple), Feb p57  
Mr. Danksy goes to Washington (O, OO, Standard & 2%, multiple), Jan p86  
Multi-train 4 by 8 layout (O, Lionel), Jan p108  
Real postwar track plan (O, Lionel), A, Oct p91  
Streamliner inspired layout (O, Lionel), Oct p66  
Super O way to go (O, Lionel), A, Feb p62  
Three-rail dreams (O, Lionel), Feb p50  
Thrice around the room track plan (O, Lionel), May p90  
Tips and tricks layout (O, multiple), May p66  
Transcontinental hi-rail layout (O, multiple), Jan p104  
Two-sheet layout (O, Lionel), Dec p82  
Visit the Super O Apple Junction layout (O, multiple), Nov p56  
\*Transcontinental hi-rail layout, Jan p104  
Troski, Stan  
\*Marx's plastic era, Jul p90  
\*Trzonic, Stan  
Hi-rail scenes made simple, Jan p82  
Let's all slow down, Feb p26  
Lionel track on your layout, Mar p76  
\*Two-sheet layout, Dec p82

#### U-V-X-Y-Z

Varda, Donald  
Streamliner inspired layout, Oct p66  
\*Visit the Super O Apple Junction layout, Nov p56  
\*What's your train worth?, Dec p56  
White, Darryl  
Make junk cars, Oct p89  
\*Who was first: Lionel or Flyer?, Jan p60  
Woodwell, Don  
Sounds for your layout, Sep p84  
Zagarino, Anthony  
Dream never dies, The, Dec p28

**S**  
Schenck, Hilbert  
Toys plus trains, Nov p86  
\*See Roadside America, Part I, Oct p50  
\*Servicing Lionel's no. 497 Coaling Station, Sep p 88

**Sets**  
Golden anniversary Flyer train, Jul p66  
James Gang set isn't a villain, Mar p60  
Lionel prewar uncataloged sets, Nov p99  
Lionel's 411E State set, Jul p64  
Lionel's Electronic set, Oct p56  
Simonini, Don  
Rails & Sails cards, Dec p70  
\*Sistine Chapel of trains, A, Oct p80  
\*Soldierless layout, Dec p107  
\*Solid foundation, A, Nov p102  
Souhrada, John  
Destined to be a layout, Sep p62  
\*Sounds for your layout, Sep p84  
Spiro, Don  
Learned layout, A, Dec p62  
Stewart, Alan  
Postwar flatcar loads, Jul p60

\*Rails & Sails cards, Dec p70  
\*Real postwar track plan, A, Oct p91  
\*Repair a steamer drawbar guide, May p87  
\*Repair Lionel's diesel fueling stations, Oct p86  
\*Repair Lionel's gang car, Feb p74  
\*Repair Lionel's ore dump cars, Jan p98  
\*Repairing Lionel's no. 497 coaling tower, Sep p88  
\*Replacing those damage-prone collector shoes, Jan p99  
\*Respect for a forgotten era, Sep p29  
Riccioli, Jim  
Colorful cast of prewar trains, Sep p46  
\*Roadside America today, Nov p70  
Russell, Harold W.  
Transcontinental hi-rail layout, Jan p104

**R**  
\*Rails & Sails cards, Dec p70  
\*Real postwar track plan, A, Oct p91  
\*Repair a steamer drawbar guide, May p87  
\*Repair Lionel's diesel fueling stations, Oct p86  
\*Repair Lionel's gang car, Feb p74  
\*Repair Lionel's ore dump cars, Jan p98  
\*Repairing Lionel's no. 497 coaling tower, Sep p88  
\*Replacing those damage-prone collector shoes, Jan p99  
\*Respect for a forgotten era, Sep p29  
Riccioli, Jim  
Colorful cast of prewar trains, Sep p46  
\*Roadside America today, Nov p70  
Russell, Harold W.  
Transcontinental hi-rail layout, Jan p104